

# TCP10L antibody



Catalog Number: 115917

## Product name

TCP10L antibody

IHC: 1:20-1:200

IF: 1:20-1:200

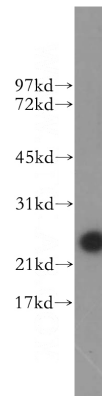
## Specificity

Human, Mouse; other species not tested.

## Antibody description

TCP10L Rabbit Polyclonal antibody. Positive WB detected in mouse testis tissue. Positive IF detected in Hela cells. Positive IHC detected in human testis tissue. Observed molecular weight by Western-blot: 24kd

## Validations



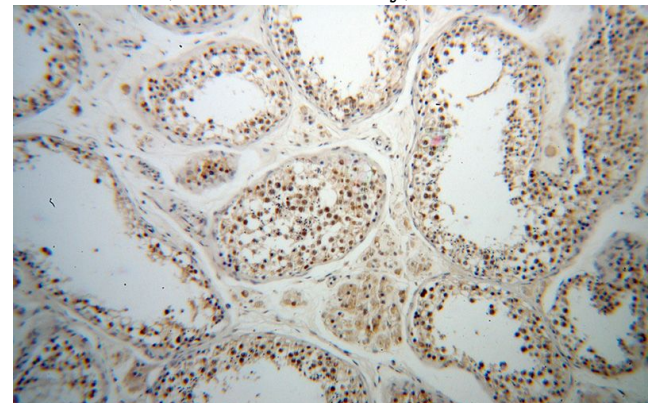
## Preparation

This antibody was obtained by immunization of TCP10L recombinant protein (Accession Number: NM\_144659). Purification method: Antigen affinity purified.

mouse testis tissue were subjected to SDS PAGE followed by western blot with Catalog No:115917(TCP10L antibody) at dilution of 1:200

## Formulation

PBS with 0.02% sodium azide and 50% glycerol pH 7.3.



## Storage

Store at -20°C. DO NOT ALIQUOT

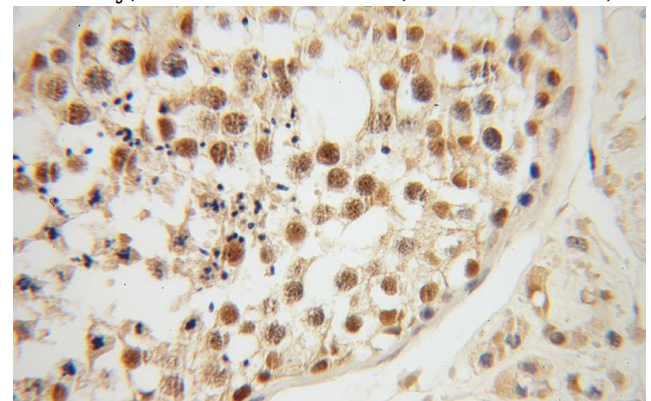
## Clonality

Polyclonal

Immunohistochemical of paraffin-embedded human testis using Catalog No:115917(TCP10L antibody) at dilution of 1:50 (under 10x lens)

## Ig Type

Rabbit IgG



## Applications

ELISA, WB, IHC, IF

## Dilutions

Recommended Dilution:

WB: 1:200-1:2000

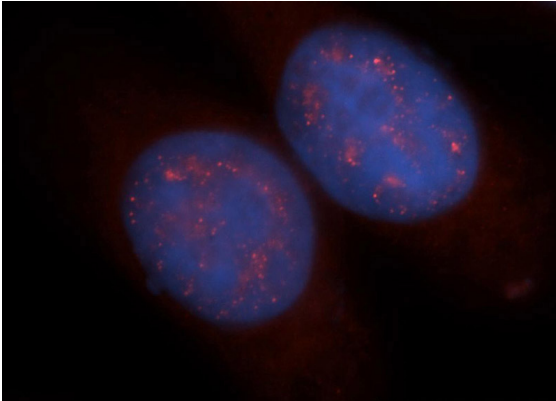
Immunohistochemical of paraffin-embedded human testis using Catalog No:115917(TCP10L

# TCP10L antibody

Catalog Number: 115917

---

antibody) at dilution of 1:50 (under 40x lens)



Immunofluorescent analysis of HeLa cells, using Catalog No:115917 and Rhodamine-labeled goat anti-rabbit IgG (red). Blue pseudocolor = DAPI (fluorescent DNA dye).