

# RPS9 antibody



Catalog Number: 114917

## Product name

RPS9 antibody

WB: 1:200-1:2000

IHC: 1:20-1:200

## Specificity

Human, Mouse; other species not tested.

## Antibody description

RPS9 Rabbit Polyclonal antibody. Positive IHC detected in human kidney tissue, human lung tissue, human ovary tissue, human skin tissue, human testis tissue. Positive WB detected in mouse uterus tissue, HeLa cells, mouse ovary tissue. Observed molecular weight by Western-blot: 25kd

## Preparation

This antibody was obtained by immunization of RPS9 recombinant protein (Accession Number: NM\_001321701). Purification method: Antigen affinity purified.

## Formulation

PBS with 0.02% sodium azide and 50% glycerol pH 7.3.

## Storage

Store at -20°C. DO NOT ALIQUOT

## Clonality

Polyclonal

## Ig Type

Rabbit IgG

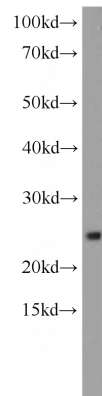
## Applications

ELISA, WB, IHC

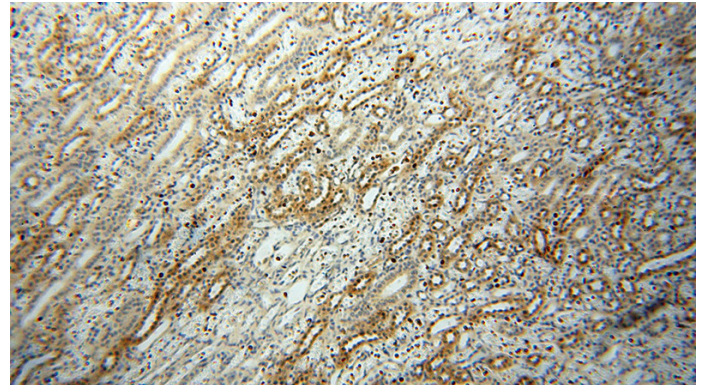
## Dilutions

Recommended Dilution:

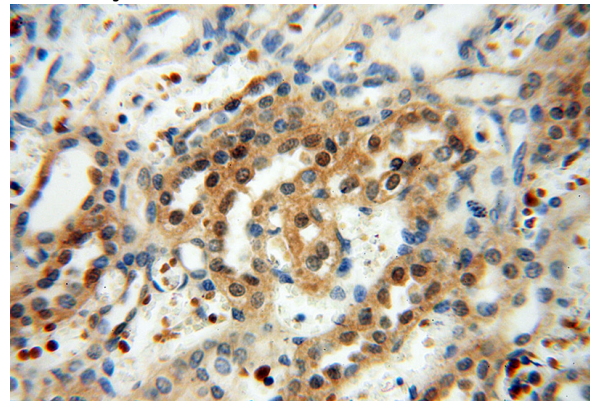
## Validations



mouse uterus tissue were subjected to SDS PAGE followed by western blot with Catalog No:114917(RPS9 antibody) at dilution of 1:500



Immunohistochemical of paraffin-embedded human kidney using Catalog No:114917(RPS9 antibody) at dilution of 1:100 (under 10x lens)



Immunohistochemical of paraffin-embedded human kidney using Catalog No:114917(RPS9 antibody) at dilution of 1:100 (under 10x lens)

# RPS9 antibody



Catalog Number: 114917

---

antibody) at dilution of 1:100 (under 40x lens)