

# METTL11A antibody



Catalog Number: 112517

## Product name

METTL11A antibody

## Specificity

human, mouse, rat; other species not tested.

## Antibody description

METTL11A Rabbit Polyclonal antibody. Positive WB detected in HepG2 cells, mouse testis tissue. Observed molecular weight by Western-blot: 25kd

## Preparation

This antibody was obtained by immunization of METTL11A recombinant protein (Accession Number: NM\_001286796). Purification method: Antigen affinity purified.

## Formulation

PBS with 0.02% sodium azide and 50% glycerol pH 7.3.

## Storage

Store at -20°C. DO NOT ALIQUOT

## Clonality

Polyclonal

## Ig Type

Rabbit IgG

## Applications

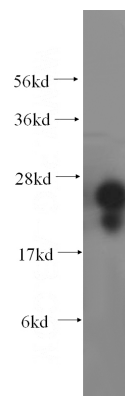
ELISA, WB

## Dilutions

Recommended Dilution:

WB: 1:500-1:5000

## Validations



HepG2 cells were subjected to SDS PAGE followed by western blot with Catalog No:112517(METTL11A antibody) at dilution of 1:800