

PPP4R2 antibody

Catalog Number: 114117

Product name

PPP4R2 antibody

IP: 1:500-1:5000

IHC: 1:20-1:200

Specificity

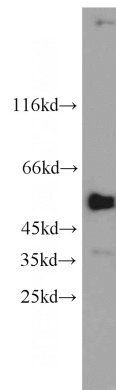
Human; other species not tested.

IF: 1:50-1:500

Antibody description

PPP4R2 Rabbit Polyclonal antibody. Positive IP detected in HepG2 cells. Positive WB detected in A549 cells, HepG2 cells. Positive IF detected in HepG2 cells. Positive IHC detected in human liver cancer tissue, human pancreas tissue. Observed molecular weight by Western-blot: 65 kDa

Validations



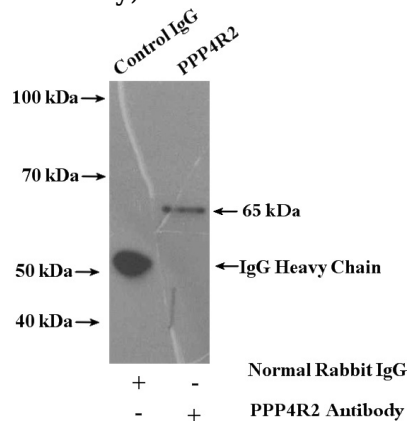
Preparation

This antibody was obtained by immunization of PPP4R2 recombinant protein (Accession Number: NM_001318025). Purification method: Antigen affinity purified.

A549 cells were subjected to SDS PAGE followed by western blot with Catalog No:114117(PPP4R2 antibody) at dilution of 1:1000

Formulation

PBS with 0.02% sodium azide and 50% glycerol pH 7.3.



Storage

Store at -20°C. DO NOT ALIQUOT

Clonality

Polyclonal

Ig Type

Rabbit IgG

Applications

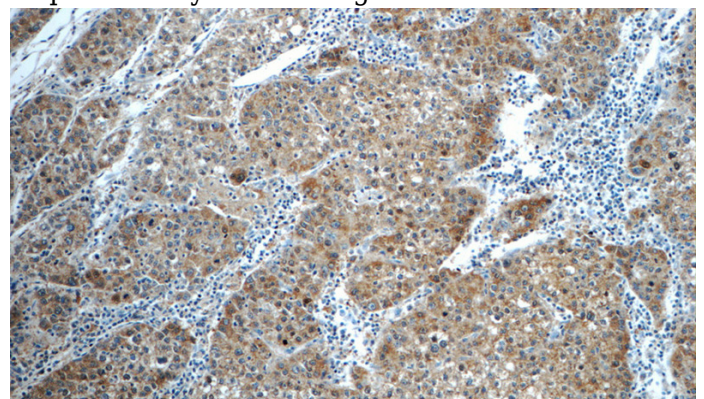
ELISA, WB, IHC, IF, IP

Dilutions

Recommended Dilution:

WB: 1:500-1:5000

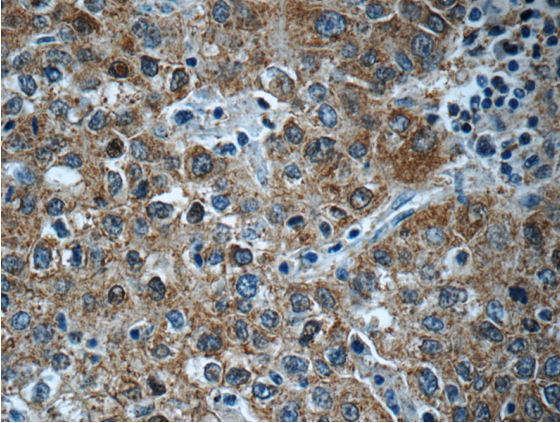
IP Result of anti-PPP4R2 (IP:Catalog No:114117, 4ug; Detection:Catalog No:114117 1:1000) with HepG2 cells lysate 3600ug.



PPP4R2 antibody

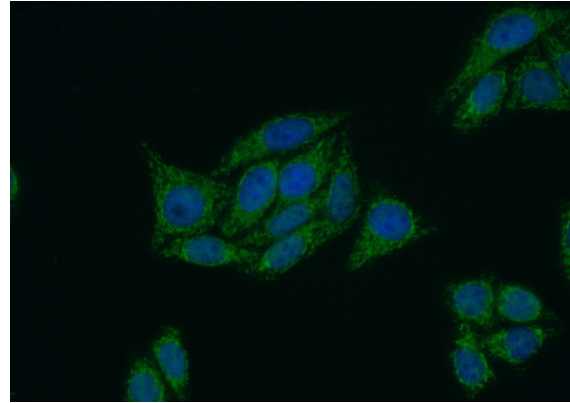
Catalog Number: 114117

Immunohistochemistry of paraffin-embedded human liver cancer tissue slide using Catalog No:114117(PPP4R2 Antibody) at dilution of 1:50 (under 10x lens)



Immunohistochemistry of paraffin-embedded human liver cancer tissue slide using Catalog

No:114117(PPP4R2 Antibody) at dilution of 1:50 (under 40x lens)



Immunofluorescent analysis of (10% Formaldehyde) fixed HepG2 cells using Catalog No:114117(PPP4R2 Antibody) at dilution of 1:50 and Alexa Fluor 488-conjugated AffiniPure Goat Anti-Rabbit IgG(H+L)