

# SUB1 antibody

Catalog Number: 115817

## Product name

SUB1 antibody

## Specificity

Human, Mouse; other species not tested.

## Antibody description

SUB1 Rabbit Polyclonal antibody. Positive WB detected in HeLa cells, rat liver tissue. Positive IHC detected in human gliomas tissue. Observed molecular weight by Western-blot: 18kd and 23-25kd

## Preparation

This antibody was obtained by immunization of SUB1 recombinant protein (Accession Number: XM\_017008987). Purification method: Antigen affinity purified.

## Formulation

PBS with 0.1% sodium azide and 50% glycerol pH 7.3.

## Storage

Store at -20°C. DO NOT ALIQUOT

## Clonality

Polyclonal

## Ig Type

Rabbit IgG

## Applications

ELISA, WB, IHC

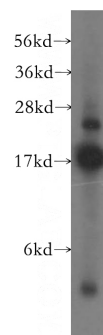
## Dilutions

Recommended Dilution:

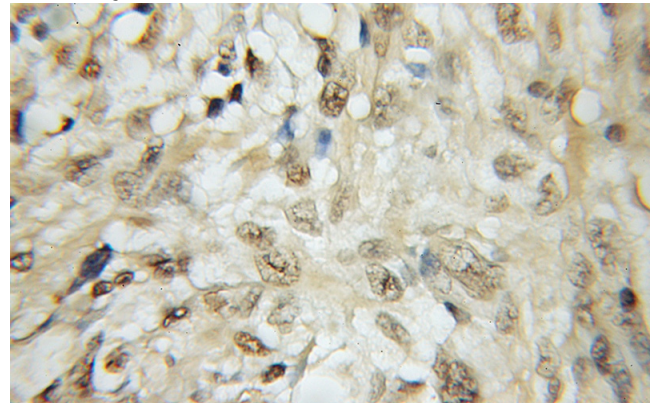
WB: 1:500-1:5000

IHC: 1:20-1:200

## Validations



HeLa cells were subjected to SDS PAGE followed by western blot with Catalog No:115817(SUB1 antibody) at dilution of 1:500



Immunohistochemical of paraffin-embedded human gliomas using Catalog No:115817(SUB1 antibody) at dilution of 1:50 (under 10x lens)