

# MRPL21 antibody



Catalog Number: 112817

## Product name

MRPL21 antibody

WB: 1:200-1:2000

IHC: 1:20-1:200

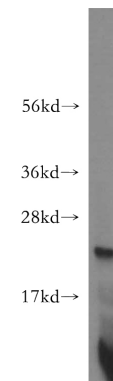
## Immunogen

[Human MRPL21 Recombinant protein \(His tag\)](#)

## Validations

## Specificity

human, mouse, rat; other species not tested.



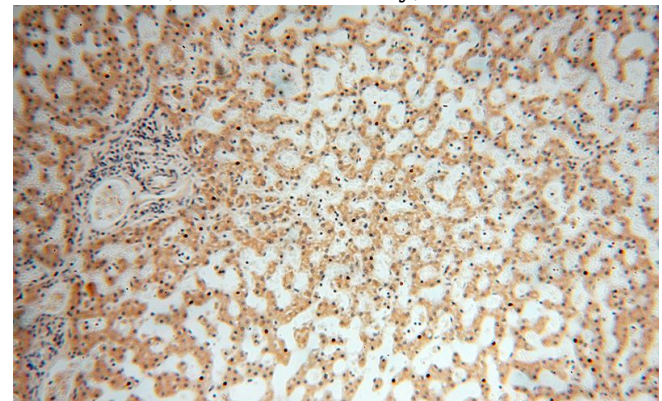
## Antibody description

MRPL21 Rabbit Polyclonal antibody. Positive WB detected in human heart tissue, HepG2 cells. Positive IHC detected in human liver. Observed molecular weight by Western-blot: 23kd

human heart tissue were subjected to SDS PAGE followed by western blot with Catalog No:112817(MRPL21 antibody) at dilution of 1:500

## Preparation

This antibody was obtained by immunization of MRPL21 recombinant protein (Accession Number: BC055088). Purification method: Antigen affinity purified.



## Formulation

PBS with 0.02% sodium azide and 50% glycerol pH 7.3.

## Storage

Store at -20°C. DO NOT ALIQUOT

## Clonality

Polyclonal

## Ig Type

Rabbit IgG

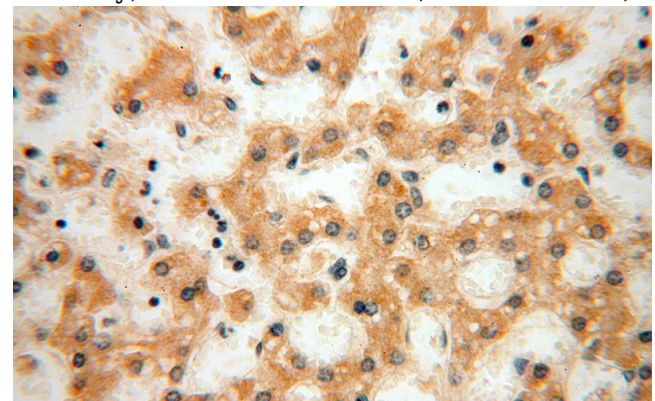
## Applications

ELISA, WB, IHC

## Dilutions

Recommended Dilution:

Immunohistochemical of paraffin-embedded human liver using Catalog No:112817(MRPL21 antibody) at dilution of 1:100 (under 10x lens)



Immunohistochemical of paraffin-embedded human liver using Catalog No:112817(MRPL21

# MRPL21 antibody



Catalog Number: 112817

---

antibody) at dilution of 1:100 (under 40x lens)