

Anti-CD85i antibody



Catalog Number: 100817

Product name

Anti-CD85i antibody

Specificity

human LILRA1

Antibody description

Rabbit polyclonal to CD85i

Preparation

Produced in rabbits immunized with A synthetic peptide corresponding to the N-terminus of the human CD85i, and purified by antigen affinity chromatography.

Formulation

0.2 µm filtered solution in PBS

Storage

This antibody can be stored at 2°C-8°C for one month without detectable loss of activity. Antibody products are stable for twelve months from date of receipt when stored at -20°C to -80°C.

Preservative-Free.

Sodium azide is recommended to avoid contamination (final concentration 0.05%-0.1%). It is toxic to cells and should be disposed of properly. Avoid repeated freeze-thaw cycles.

Clonality

Polyclonal

Ig Type

Rabbit IgG

Applications

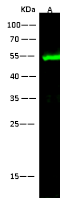
WB, IP

Dilutions

WB: 5-10 µg/ml

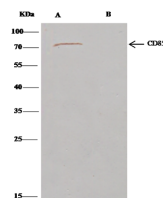
IP: 1-4 µg/mg of lysate

Validations



Items	Lanes
Sample (Membrane Lysate)	A MCF7
Sample Volume (µg/lane)	30
Gel	13%SDS-PAGE reducing gel
Recommended Concentration	5-10 µg/ml
Secondary Antibody	Dylight 800-labeled Antibody to Rabbit IgG (1141) at 1:5000 dilution. Developed using Odyssey imaging system.
Explanation	Predicted band size : 53 kDa Observed band size : 53 kDa

CD85i Antibody, Rabbit PAb, Antigen Affinity Purified, Western blot



Items	Lanes
Sample (wholecell lysate)	A MCF7
Sample quantity	0.5 µg
IP antibody type	KLH-SMCC-sinoA479-HP02
IP antibody quantity	2 µg
Protein G agarose	15 µl of 50% Protein G Agarose
Gel	13%SDS-PAGE reducing gel
Primary antibody	KLH-SMCC-sinoA479 antibody at 10 µg/ml
Secondary antibody	Cleav-Block IP Detection Reagent (DIRP) at 1:1000 dilution.

CD85i Antibody, Rabbit PAb, Antigen Affinity Purified, Immunoprecipitation