

# band 3 antibody

Catalog Number: 108417

## Product name

band 3 antibody

IP: 1:200-1:1000

IHC: 1:20-1:200

## Specificity

Human, Mouse, Rat; other species not tested.

## Antibody description

band 3 Rabbit Polyclonal antibody. Positive IHC detected in human spleen tissue. Positive WB detected in HepG2 cells. Positive IP detected in mouse liver tissue. Observed molecular weight by Western-blot: 50 kDa

## Preparation

This antibody was obtained by immunization of band 3 recombinant protein (Accession Number: NM\_000342). Purification method: Antigen affinity purified.

## Formulation

PBS with 0.02% sodium azide and 50% glycerol pH 7.3.

## Storage

Store at -20°C. DO NOT ALIQUOT

## Clonality

Polyclonal

## Ig Type

Rabbit IgG

## Applications

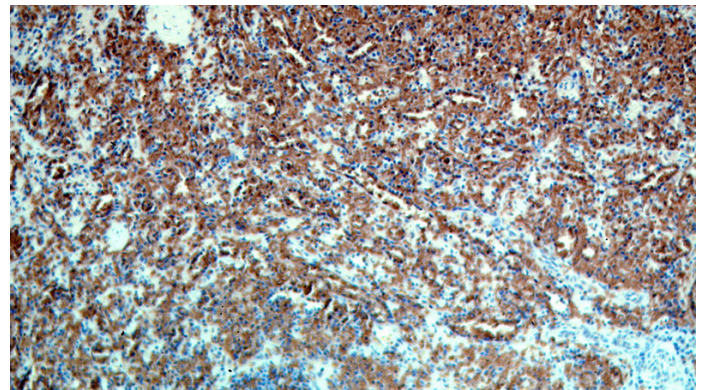
ELISA, IHC, WB, IP

## Dilutions

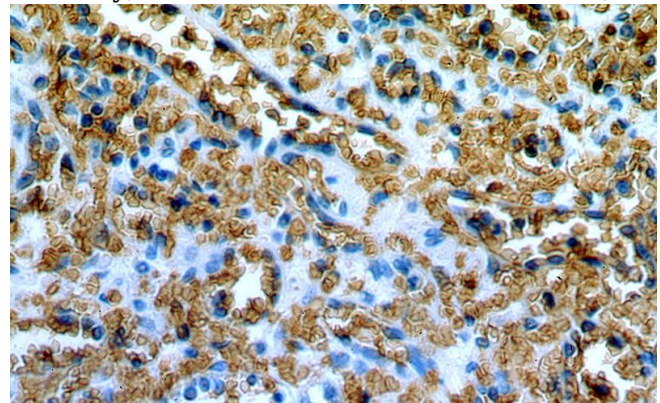
Recommended Dilution:

WB: 1:200-1:1000

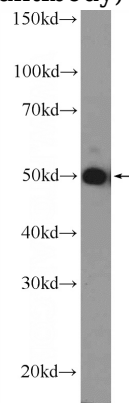
## Validations



Immunohistochemical of paraffin-embedded human spleen using Catalog No:108417(SLC4A1 antibody) at dilution of 1:50 (under 10x lens)



Immunohistochemical of paraffin-embedded human spleen using Catalog No:108417(SLC4A1 antibody) at dilution of 1:50 (under 40x lens)



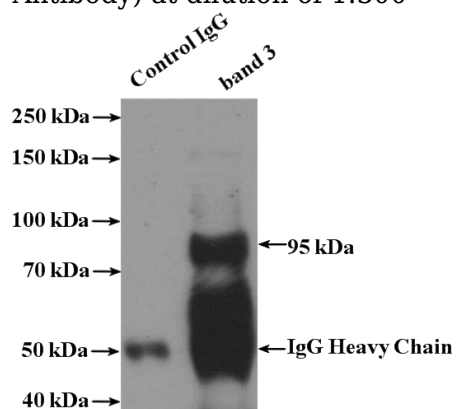
HepG2 cells were subjected to SDS PAGE followed by western blot with Catalog No:108417(SLC4A1

# band 3 antibody

Catalog Number: 108417

---

Antibody) at dilution of 1:300



IP Result of anti-SLC4A1 (IP:Catalog No:108417, 4ug; Detection:Catalog No:108417 1:300) with mouse liver tissue lysate 4000ug.