

# SMAD3 antibody



Catalog Number: 115417

## Product name

SMAD3 antibody

IHC: 1:20-1:200

IF: 1:10-1:100

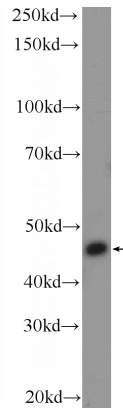
## Specificity

Human; other species not tested.

## Validations

## Antibody description

SMAD3 Rabbit Polyclonal antibody. Positive WB detected in Jurkat cells, A431 cells, A549 cells, HeLa cells, SH-SY5Y cells. Positive IF detected in HeLa cells. Positive IHC detected in human colon cancer tissue, human liver cancer tissue. Observed molecular weight by Western-blot: 48 kDa



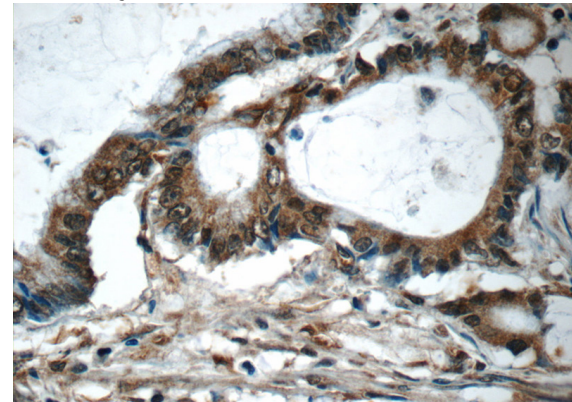
## Preparation

This antibody was obtained by immunization of Peptide (Accession Number: NM\_005902). Purification method: Antigen affinity purified.

Jurkat cells were subjected to SDS PAGE followed by western blot with Catalog No:115417(SMAD3 Antibody) at dilution of 1:600

## Formulation

PBS with 0.1% sodium azide and 50% glycerol pH 7.3.



## Storage

Store at -20°C. DO NOT ALIQUOT

Immunohistochemistry of paraffin-embedded human colon cancer tissue slide using Catalog No:115417(SMAD3 Antibody) at dilution of 1:50 (under 40x lens)

## Clonality

Polyclonal

## Ig Type

Rabbit IgG

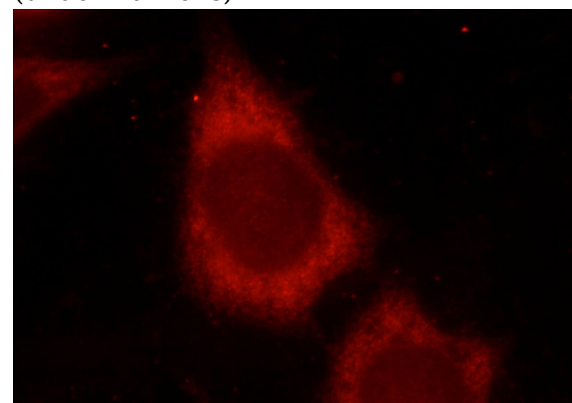
## Applications

ELISA, WB, IHC, IF

## Dilutions

Recommended Dilution:

WB: 1:200-1:2000



Immunofluorescent analysis of HeLa cells using

# SMAD3 antibody



Catalog Number: 115417

---

Catalog No:115417(SMAD3 Antibody) at dilution of 1:25 and Rhodamine-Goat anti-Rabbit IgG