

# LYZL6 antibody

Catalog Number: 112417

## Product name

LYZL6 antibody

## Specificity

Human, Mouse, Rat; other species not tested.

## Antibody description

LYZL6 Rabbit Polyclonal antibody. Positive WB detected in human testis tissue. Positive IHC detected in rat testis tissue, mouse testis tissue. Observed molecular weight by Western-blot: 17kd

## Preparation

This antibody was obtained by immunization of LYZL6 recombinant protein (Accession Number: NM\_020426). Purification method: Antigen affinity purified.

## Formulation

PBS with 0.02% sodium azide and 50% glycerol pH 7.3.

## Storage

Store at -20°C. DO NOT ALIQUOT

## Clonality

Polyclonal

## Ig Type

Rabbit IgG

## Applications

ELISA, WB, IHC

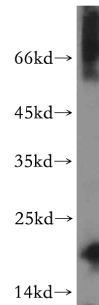
## Dilutions

Recommended Dilution:

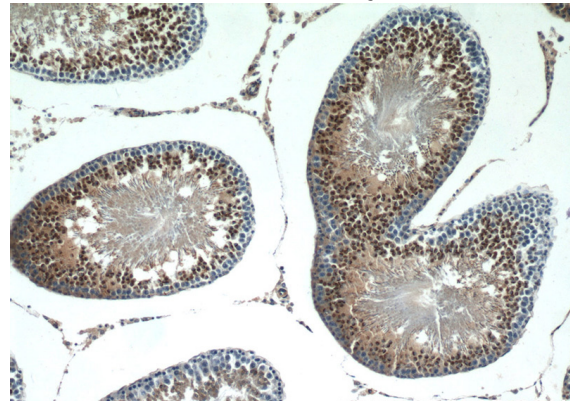
WB: 1:200-1:2000

IHC: 1:20-1:200

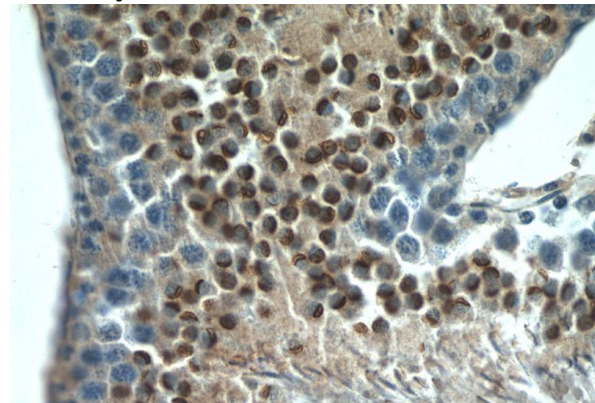
## Validations



human testis tissue were subjected to SDS PAGE followed by western blot with Catalog No:112417(LYZL6 antibody) at dilution of 1:300



Immunohistochemistry of paraffin-embedded rat testis tissue slide using Catalog No:112417(LYZL6 Antibody) at dilution of 1:50 (under 40x lens)



Immunohistochemistry of paraffin-embedded rat testis tissue slide using Catalog No:112417(LYZL6 Antibody) at dilution of 1:50 (under 40x lens)