

# EXT2 antibody

Catalog Number: 110417

## Product name

EXT2 antibody

## Specificity

Human, Mouse, Rat; other species not tested.

## Antibody description

EXT2 Rabbit Polyclonal antibody. Positive IHC detected in human colon cancer tissue. Positive WB detected in NIH/3T3 cells, C6 cells, Jurkat cells, U-937 cells. Observed molecular weight by Western-blot: 70-82kd

## Preparation

This antibody was obtained by immunization of EXT2 recombinant protein (Accession Number: NM\_207122). Purification method: Antigen affinity purified.

## Formulation

PBS with 0.1% sodium azide and 50% glycerol pH 7.3.

## Storage

Store at -20°C. DO NOT ALIQUOT

## Clonality

Polyclonal

## Ig Type

Rabbit IgG

## Applications

ELISA, IHC, WB

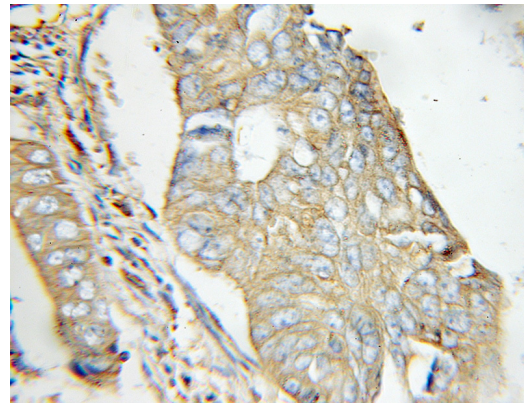
## Dilutions

Recommended Dilution:

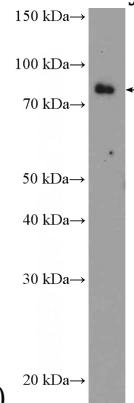
WB: 1:500-1:5000

IHC: 1:20-1:200

## Validations



Immunohistochemical of paraffin-embedded human colon cancer using Catalog No:110417(EXT2 antibody) at dilution of 1:50



(under 10x lens)

NIH/3T3 cells were subjected to SDS PAGE followed by western blot with Catalog No:110417(EXT2 Antibody) at dilution of 1:1000