

KCTD12 antibody



Catalog Number: 112017

Product name

KCTD12 antibody

Specificity

Human, Mouse, Rat; other species not tested.

Antibody description

KCTD12 Rabbit Polyclonal antibody. Positive IF detected in Hela cells. Positive WB detected in human brain tissue, HEK-293 cells, MCF7 cells, mouse brain tissue. Observed molecular weight by Western-blot: 40 kDa

Preparation

This antibody was obtained by immunization of KCTD12 recombinant protein (Accession Number: NM_138444). Purification method: Antigen affinity purified.

Formulation

PBS with 0.02% sodium azide and 50% glycerol pH 7.3.

Storage

Store at -20°C. DO NOT ALIQUOT

Clonality

Polyclonal

Ig Type

Rabbit IgG

Applications

ELISA, WB, IF

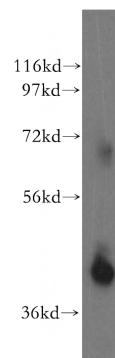
Dilutions

Recommended Dilution:

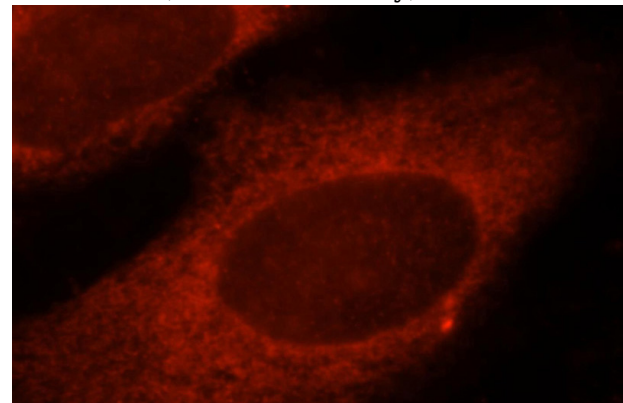
WB: 1:500-1:5000

IF: 1:10-1:100

Validations



human brain tissue were subjected to SDS PAGE followed by western blot with Catalog No:112017(KCTD12 antibody) at dilution of 1:500



Immunofluorescent analysis of Hela cells, using KCTD12 antibody Catalog No:112017 at 1:25 dilution and Rhodamine-labeled goat anti-rabbit IgG (red).