

# C21orf59 antibody



Catalog Number: 108707

## Product name

C21orf59 antibody

## Specificity

Human; other species not tested.

## Antibody description

C21orf59 Rabbit Polyclonal antibody. Positive WB detected in K-562 cells, HeLa cells, MCF-7 cells, PC-3 cells. Positive IF detected in HEK-293 cells. Observed molecular weight by Western-blot: 33 kDa

## Preparation

This antibody was obtained by immunization of C21orf59 recombinant protein (Accession Number: NM\_021254). Purification method: Antigen affinity purified.

## Formulation

PBS with 0.1% sodium azide and 50% glycerol pH 7.3.

## Storage

Store at -20°C. DO NOT ALIQUOT

## Clonality

Polyclonal

## Ig Type

Rabbit IgG

## Applications

ELISA, WB, IF

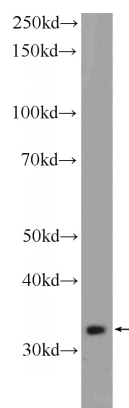
## Dilutions

Recommended Dilution:

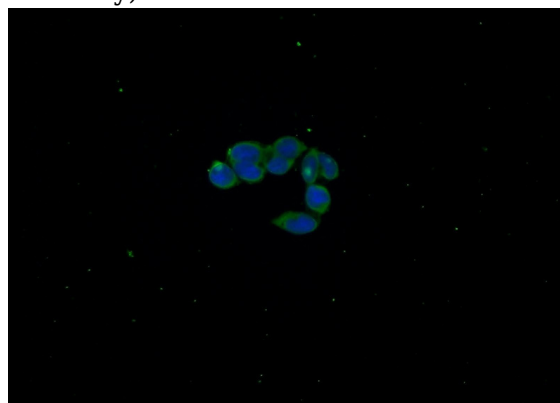
WB: 1:500-1:5000

IF: 1:20-1:200

## Validations



K-562 cells were subjected to SDS PAGE followed by western blot with Catalog No:108707(C21orf59 Antibody) at dilution of 1:1000



Immunofluorescent analysis of HEK-293 cells using Catalog No:108707(C21orf59 Antibody) at dilution of 1:50 and Alexa Fluor 488-conjugated AffiniPure Goat Anti-Rabbit IgG(H+L)