

Anti-Nes antibody

Catalog Number: 176707

Product name

Anti-Nes antibody

Specificity

Human, Mouse

Antibody description

Rabbit polyclonal antibody to Nes

Preparation

This antigen of this antibody was synthetic peptide within human nestin aa 1279-1323.

Formulation

Liquid, 1*PBS (pH7.4), 0.2% BSA, 40% Glycerol.
Preservative: 0.05% Sodium Azide.

Storage

Store at +4°C after thawing. Aliquot store at -20°C or -80°C. Avoid repeated freeze / thaw cycles.

Clonality

Polyclonal

Ig Type

Rabbit IgG

Applications

IHC-P

Dilutions

IHC-P: 1:50-200

Validations

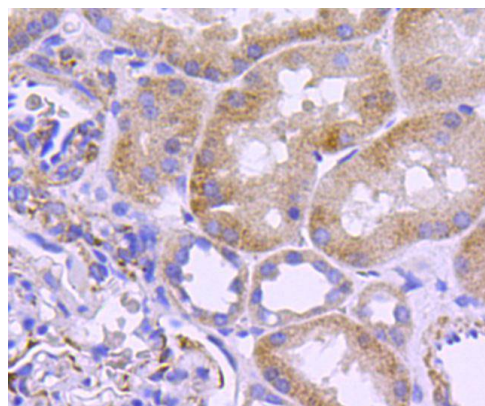


Fig1: Immunohistochemical analysis of paraffin-embedded human kidney tissue using anti-Filamin A antibody. Counter stained with hematoxylin.

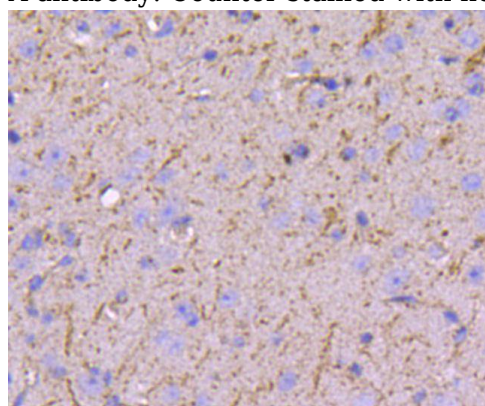


Fig2: Immunohistochemical analysis of paraffin-embedded mouse brain tissue using anti-Filamin A antibody. Counter stained with hematoxylin.