

# Anti-CD86 Rabbit antibody



Catalog Number: 166707

## Product name

Anti-CD86 Rabbit antibody

## Specificity

Human, Rat

## Antibody description

CD86 Rabbit polyclonal antibody

## Preparation

Antigen: A synthesized peptide derived from human CD86

## Formulation

Rabbit IgG in phosphate buffered saline , pH 7.4, 150mM NaCl, 0.02% sodium azide and 50% glycerol.

## Storage

Store at 4°C short term. Store at -20°C long term. Avoid freeze / thaw cycle.

## Clonality

Polyclonal

## Ig Type

Rabbit IgG

## Applications

WB, IHC-P, ICC/IF, IP, FC

## Dilutions

WB: 1/1000-1/2000

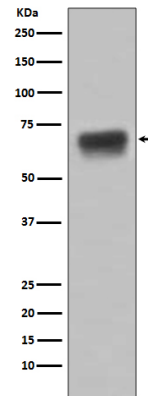
IHC: 1/50-1/200

ICC/IF: 1/50-1/200

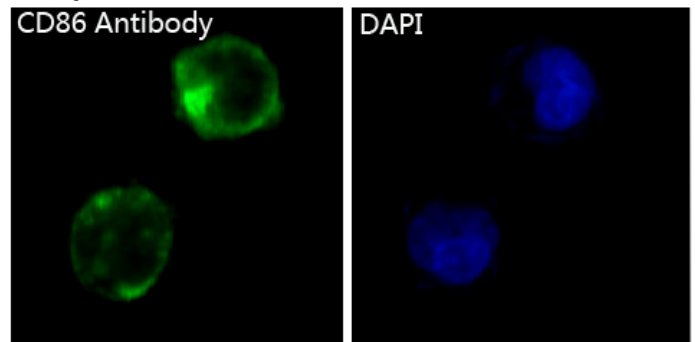
IP: 1/50

FC: 1/50

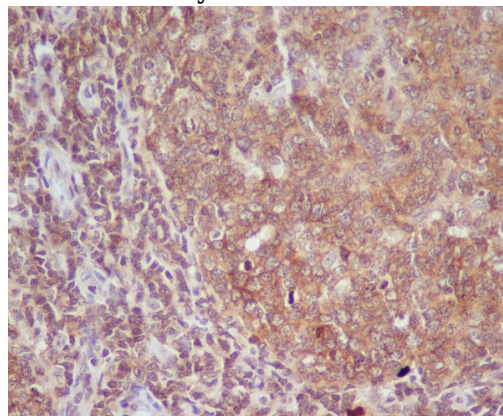
## Validations



Western blot analysis of CD86 expression in Raji cell lysate.



Immunofluorescent analysis of K562 cells, using CD86 Antibody .



Immunohistochemical analysis of paraffin-embedded human tonsil, using CD86 Antibody .