

STIM1 antibody

Catalog Number: 115707

Product name

STIM1 antibody

Specificity

Human, Mouse; other species not tested.

Antibody description

STIM1 Rabbit Polyclonal antibody. Positive IP detected in Raji cells. Positive WB detected in Jurkat cells, BxPC-3 cells, HT-1080 cells, mouse liver tissue, NIH/3T3 cells, Raji cells. Positive FC detected in HepG2 cells. Positive IHC detected in human ovary tumor tissue, human lung cancer tissue. Positive IF detected in HepG2 cells. Observed molecular weight by Western-blot: 80-90 kDa

Preparation

This antibody was obtained by immunization of STIM1 recombinant protein (Accession Number: NM_003156). Purification method: Antigen affinity purified.

Formulation

PBS with 0.1% sodium azide and 50% glycerol pH 7.3.

Storage

Store at -20°C. DO NOT ALIQUOT

Clonality

Polyclonal

Ig Type

Rabbit IgG

Applications

ELISA, WB, IP, IHC, IF, FC

Dilutions

Recommended Dilution:

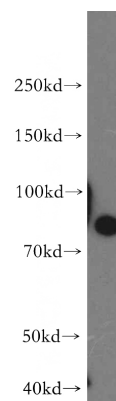
WB: 1:200-1:2000

IP: 1:500-1:5000

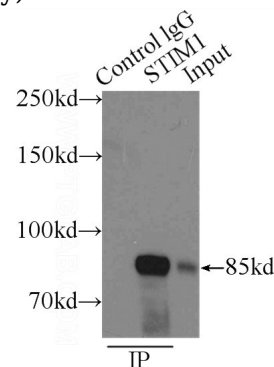
IHC: 1:20-1:200

IF: 1:10-1:100

Validations



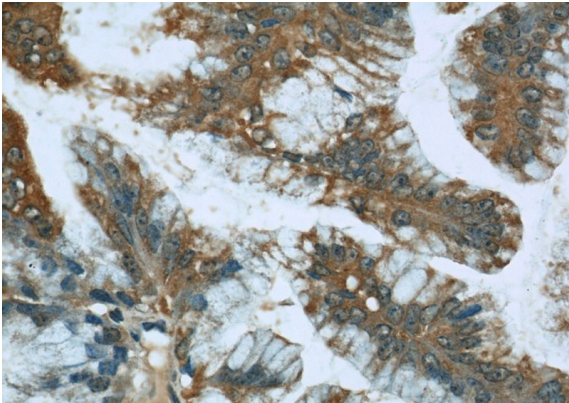
Jurkat cells were subjected to SDS PAGE followed by western blot with Catalog No:115707(STIM1 antibody) at dilution of 1:300



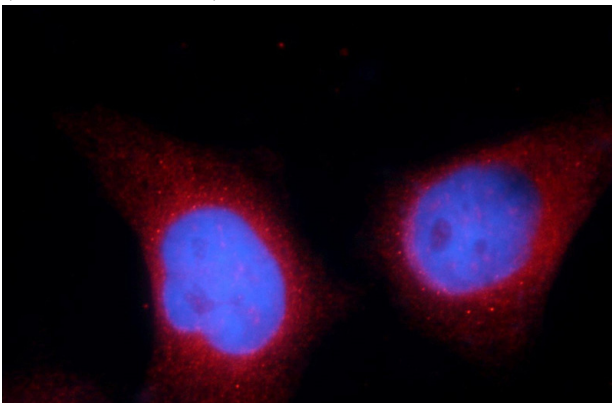
IP Result of anti-STIM1 (IP:Catalog No:115707, 3ug; Detection:Catalog No:115707 1:1000) with Raji cells lysate 3800ug.

STIM1 antibody

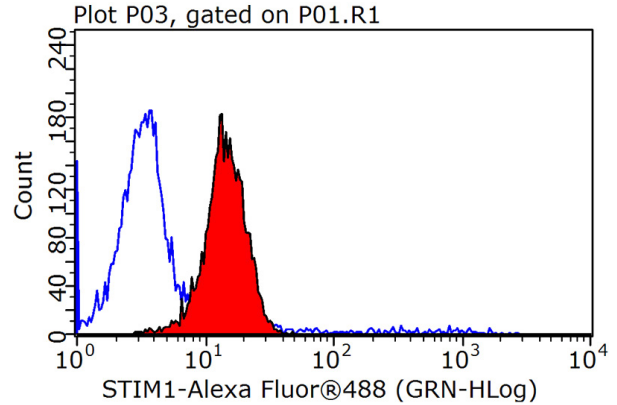
Catalog Number: 115707



Immunohistochemical of paraffin-embedded human ovary tumor using Catalog No:115707(STIM1 antibody) at dilution of 1:50 (under 40x lens)



Immunofluorescent analysis of HepG2 cells using Catalog No:115707(STIM1 Antibody) at dilution of 1:25 and Rhodamine-Goat anti-Rabbit IgG



1X10⁶ HepG2 cells were stained with .2ug STIM1 antibody (Catalog No:115707, red) and control antibody (blue). Fixed with 90% MeOH blocked with 3% BSA (30 min). Alexa Fluor 488-conjugated AffiniPure Goat Anti-Rabbit IgG(H+L) with dilution 1:1000.