

Anti-ST18 antibody

Catalog Number: 175707

Product name

Anti-ST18 antibody

Specificity

Human, Mouse, Rat, Dog, Horse, Sheep

Antibody description

Rabbit polyclonal antibody to ST18

Preparation

This antigen of this antibody was klh conjugated synthetic peptide derived from human st18/znf387 451-550/1047

Formulation

Liquid, 0.01M TBS(pH7.4) with 1% BSA, 0.03% Proclin300 and 50% Glycerol.

Storage

Store at -20°C for one year. Avoid repeated freeze/thaw cycles. The lyophilized antibody is stable at room temperature for at least one month and for greater than a year when kept at -20°C. When reconstituted in sterile pH 7.4 0.01M PBS or diluent of antibody the antibody is stable for at least two weeks at 2-4°C.

Clonality

Polyclonal

Ig Type

Rabbit IgG

Applications

WB, FC

Dilutions

WB:1:500-2000

FC:3ug/Test

Validations

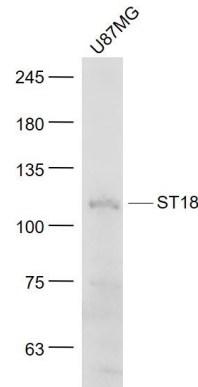


Fig1: Sample.; U87MG(Human) Cell Lysate at 30 ug; Primary: Anti- ST18 at 1/1000 dilution; Secondary: IRDye800CW Goat Anti-Rabbit IgG at 1/20000 dilution; Predicted band size: 115 kD; Observed band size: 115 kD

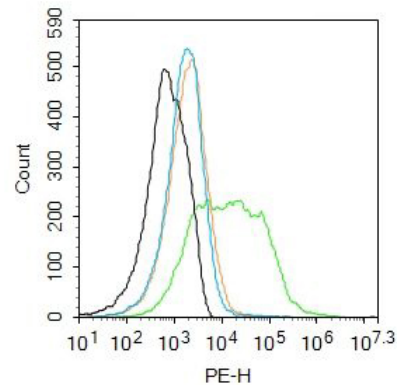


Fig2: Blank control: Mouse kidney.; Primary Antibody (green line): Rabbit Anti-ST18 antibody ; Dilution: 3µg /10⁶ cells;; Isotype Control Antibody (orange line): Rabbit IgG .; Secondary Antibody : Goat anti-rabbit IgG-PE; Dilution: 1µg /test.; Protocol; The cells were incubated in 5%BSA to block non-specific protein-protein interactions for 30 min at at room temperature .Cells stained with Primary Antibody for 30 min at room temperature. The secondary antibody used for 40 min at room temperature. Acquisition of 20,000 events was performed.