

# PEPD antibody



Catalog Number: 113707

## Product name

PEPD antibody

## Specificity

Human, Mouse; other species not tested.

## Antibody description

PEPD Rabbit Polyclonal antibody. Positive WB detected in HeLa cells, HepG2 cells, MDA-MB-453s cells, mouse skin tissue. Positive IHC detected in human lung cancer tissue. Observed molecular weight by Western-blot: 55 kDa

## Preparation

This antibody was obtained by immunization of PEPD recombinant protein (Accession Number: NM\_000285). Purification method: Antigen affinity purified.

## Formulation

PBS with 0.1% sodium azide and 50% glycerol pH 7.3.

## Storage

Store at -20°C. DO NOT ALIQUOT

## Clonality

Polyclonal

## Ig Type

Rabbit IgG

## Applications

ELISA, WB, IHC

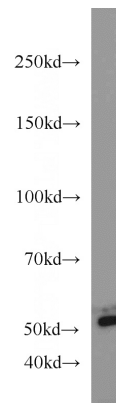
## Dilutions

Recommended Dilution:

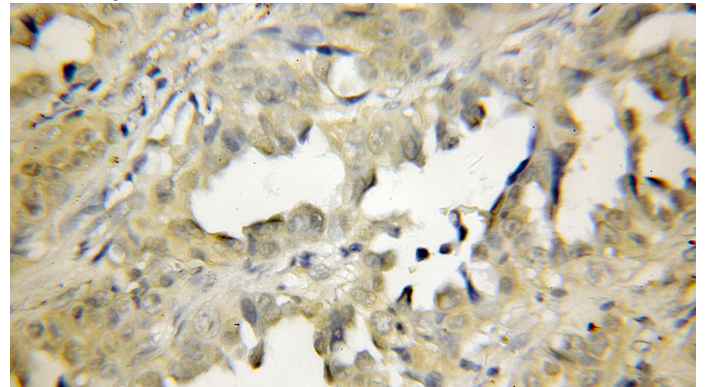
WB: 1:200-1:2000

IHC: 1:20-1:200

## Validations



HeLa cells were subjected to SDS PAGE followed by western blot with Catalog No:113707(PEPD antibody) at dilution of 1:600



Immunohistochemical of paraffin-embedded human lung cancer using Catalog No:113707(PEPD antibody) at dilution of 1:50 (under 10x lens)