

# MMP7 antibody

Catalog Number: 112707

## Product name

MMP7 antibody

## Specificity

Human, Mouse; other species not tested.

## Antibody description

MMP7 Rabbit Polyclonal antibody. Positive IHC detected in human pancreas cancer tissue, human stomach tissue. Positive WB detected in NIH/3T3 cells, COLO 320 cells, human placenta tissue, mouse lung tissue. Observed molecular weight by Western-blot: 28-30 kDa

## Preparation

This antibody was obtained by immunization of MMP7 recombinant protein (Accession Number: NM\_002423). Purification method: Antigen affinity purified.

## Formulation

PBS with 0.1% sodium azide and 50% glycerol pH 7.3.

## Storage

Store at -20°C. DO NOT ALIQUOT

## Clonality

Polyclonal

## Ig Type

Rabbit IgG

## Applications

ELISA, WB, IHC

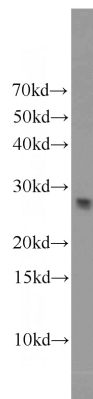
## Dilutions

Recommended Dilution:

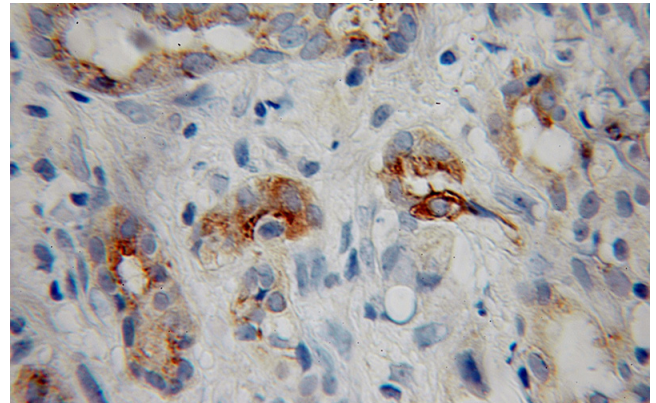
WB: 1:200-1:2000

IHC: 1:20-1:200

## Validations



NIH/3T3 cells were subjected to SDS PAGE followed by western blot with Catalog No:112707(MMP7 antibody) at dilution of 1:800



Immunohistochemical of paraffin-embedded human pancreas cancer using Catalog No:112707(MMP7 antibody) at dilution of 1:100 (under 10x lens)