

Anti-Junctional Adhesion Molecule 1/JAM-A Rabbit antibody



Catalog Number: 167607

Product name

Rabbit IgG

Anti-Junctional Adhesion Molecule 1/JAM-A Rabbit antibody

Applications

WB, ICC/IF, FC, IP

Specificity

Human

Dilutions

WB: 1/1000

Antibody description

Junctional Adhesion Molecule 1/JAM-A Rabbit monoclonal antibody

ICC/IF: 1/20

FC: 1/50

Preparation

Antigen: Recombinant protein of human Junctional Adhesion Molecule 1/JAM-A

IP: 1/20

Validations

Formulation

50nM Tris-Glycine(pH 7.4), 0.15M NaCl, 40%Glycerol, 0.01% sodium azide and 0.05% BSA

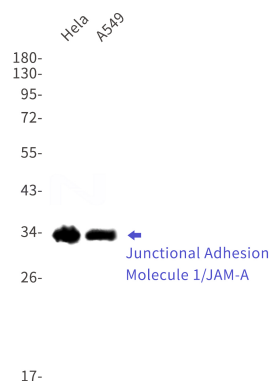
Storage

Store at 4°C short term. Store at -20°C long term. Avoid freeze / thaw cycle.

Clonality

Monoclonal

Ig Type



Western blot detection of Junctional Adhesion Molecule 1/JAM-A in HeLa,A549 cell lysates using Junctional Adhesion Molecule 1/JAM-A Rabbit mAb(1:1000 diluted).Predicted band size:31kDa.Observed band size:31kDa.