

# IDI1 antibody

Catalog Number: 111607

## Product name

IDI1 antibody

## Specificity

Human, Mouse, Rat; other species not tested.

## Antibody description

IDI1 Rabbit Polyclonal antibody. Positive WB detected in mouse liver tissue, human liver tissue, L02 cells. Positive IP detected in mouse liver tissue. Observed molecular weight by Western-blot: 28 kDa

## Preparation

This antibody was obtained by immunization of IDI1 recombinant protein (Accession Number: BC019227). Purification method: Antigen affinity purified.

## Formulation

PBS with 0.1% sodium azide and 50% glycerol pH 7.3.

## Storage

Store at -20°C. DO NOT ALIQUOT

## Clonality

Polyclonal

## Ig Type

Rabbit IgG

## Applications

ELISA, WB, IP

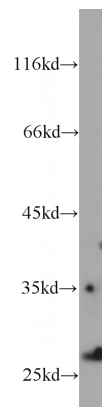
## Dilutions

Recommended Dilution:

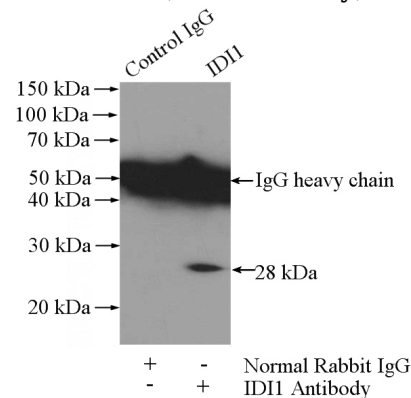
WB: 1:200-1:1000

IP: 1:200-1:1000

## Validations



mouse liver tissue were subjected to SDS PAGE followed by western blot with Catalog No:111607(IDI1 antibody) at dilution of 1:300



IP Result of anti-IDI1 (IP:Catalog No:111607, 4ug; Detection:Catalog No:111607 1:300) with mouse liver tissue lysate 4000ug.