

SLC27A2 Polyclonal Antibody



Catalog Number: 160607

Product name

SLC27A2 Polyclonal Antibody

Specificity

Human, Mouse

Antibody description

Polyclonal antibody to SLC27A2

Preparation

Antigen: Recombinant fusion protein containing a sequence corresponding to amino acids 30-200 of human SLC27A2 (NP_001153101.1).

Formulation

PBS with 0.02% sodium azide, 50% glycerol, pH7.3.

Storage

Store at -20°C. Avoid freeze / thaw cycles.

Clonality

Polyclonal

Ig Type

Rabbit IgG

Applications

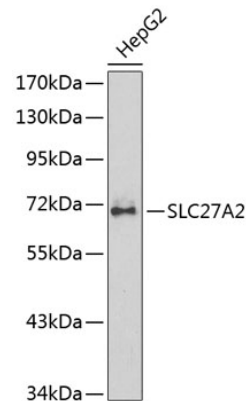
WB, IHC

Dilutions

WB 1:500 - 1:2000

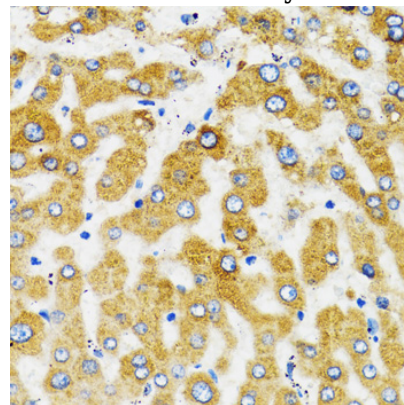
IHC 1:50 - 1:200

Validations



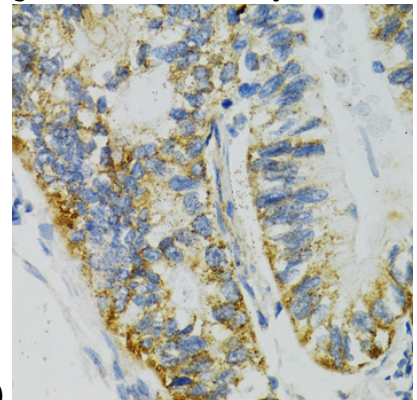
Western blot - SLC27A2 Polyclonal Antibody

Western blot analysis of extracts of HepG2 cells, using SLC27A2 antibody. Secondary antibody: HRP Goat Anti-Rabbit IgG (H+L) at 1:10000 dilution. Lysates/proteins: 25ug per lane. Blocking buffer: 3% nonfat dry milk in TBST.



Immunohistochemistry - SLC27A2 Polyclonal Antibody

Immunohistochemistry of paraffin-embedded human liver using SLC27A2 antibody at dilution of



1:100 (40x lens).

Immunohistochemistry - SLC27A2 Polyclonal

SLC27A2 Polyclonal Antibody



Catalog Number: 160607

Antibody

human gastric cancer using SLC27A2 antibody at dilution of 1:100 (40x lens).

Immunohistochemistry of paraffin-embedded