

Anti-bFGF/FGF2 antibody



Catalog Number: 105207

Product name

Anti-bFGF/FGF2 antibody

Specificity

Human FGF2

Antibody description

Rabbit polyclonal to bFGF/FGF2

Preparation

Produced in rabbits immunized with A synthetic peptide corresponding to the N-terminus of the human bFGF., and purified by antigen affinity chromatography.

Formulation

0.2 µm filtered solution in PBS

Storage

This antibody can be stored at 2°C-8°C for one month without detectable loss of activity. Antibody products are stable for twelve months from date of receipt when stored at -20°C to -80°C.

Preservative-Free.

Sodium azide is recommended to avoid contamination (final concentration 0.05%-0.1%). It is toxic to cells and should be disposed of

properly. Avoid repeated freeze-thaw cycles.

Clonality

Polyclonal

Ig Type

Rabbit IgG

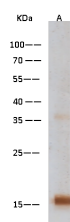
Applications

WB

Dilutions

WB: 0.5-1 µg/mL

Validations



Lanes	A
Items	
Sample (Recombinant protein)	bFGF
Sample Volume (ng/lane)	30
Gel	13% SDS-PAGE reducing gel
Recommended Concentration	0.5-1 µg/ml
Secondary Antibody	HRP Conjugated Goat anti-rabbit IgG (H+L) at 1:1000 dilution

bFGF antibody, Rabbit PAb, Antigen Affinity Purified, Western blot