

TCF7L1 antibody



Catalog Number: 115907

Product name

TCF7L1 antibody

Specificity

human, mouse, rat; other species not tested.

Antibody description

TCF7L1 Rabbit Polyclonal antibody. Positive IHC detected in human breast cancer. Positive WB detected in mouse brain tissue. Observed molecular weight by Western-blot: 63kd

Preparation

This antibody was obtained by immunization of TCF7L1 recombinant protein (Accession Number: NM_031283). Purification method: Antigen affinity purified.

Formulation

PBS with 0.02% sodium azide and 50% glycerol pH 7.3.

Storage

Store at -20°C. DO NOT ALIQUOT

Clonality

Polyclonal

Ig Type

Rabbit IgG

Applications

ELISA, WB, IHC

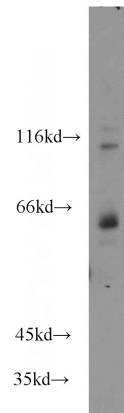
Dilutions

Recommended Dilution:

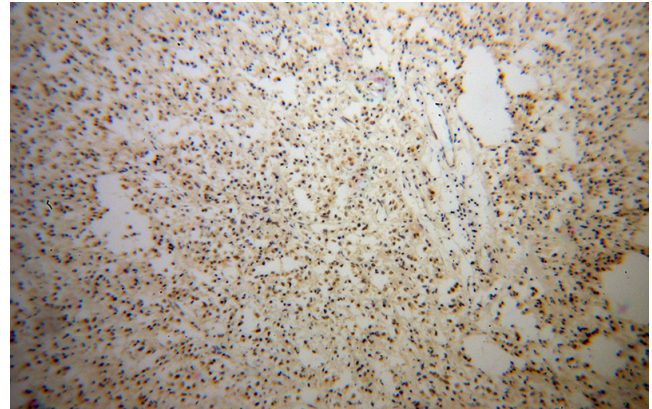
WB: 1:500-1:5000

IHC: 1:20-1:200

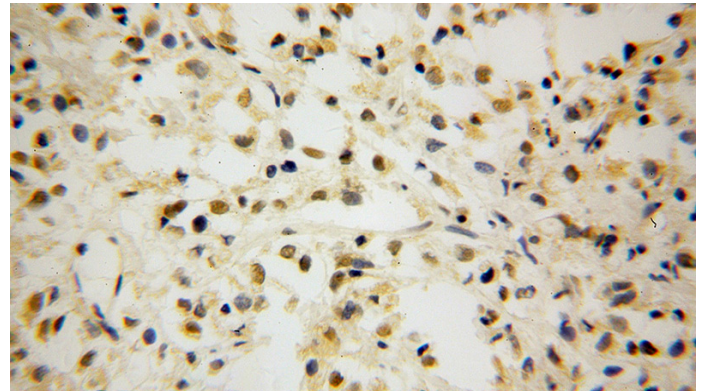
Validations



mouse brain tissue were subjected to SDS PAGE followed by western blot with Catalog No:115907(TCF7L1 antibody) at dilution of 1:1000



Immunohistochemical of paraffin-embedded human breast cancer using Catalog No:115907(TCF7L1 antibody) at dilution of 1:100 (under 10x lens)



Immunohistochemical of paraffin-embedded human breast cancer using Catalog No:115907(TCF7L1 antibody) at dilution of 1:100 (under 40x lens)