

## General Information

### Gene Name Synonym

Neuregulin-1; Acetylcholine receptor-inducing activity; Breast cancer cell differentiation factor p45; Glial growth factor; Heregulin; Neu differentiation factor; Sensory and motor neuron-derived factor

### Protein Construction

A DNA sequence encoding the human NRG1 isoform alpha (Q02297-1) extracellular domain (Ser 20-Lys 241) was fused with the Fc region of human IgG1 at the C-terminus.

### Organism

Human

### Expression Host

Human Cells

## QC Testing

### Activity

1. Measured by its ability to biotinylated Human ErbB4-Fc (cat:503621) in functional Elisa.
2. Measured by its ability to biotinylated Rhesus ErbB3-His (Cat:504642) in functional Elisa.
3. Measured by its ability to biotinylated Rhesus ErbB3 (Cat:504643) in functional Elisa.

### Purity

> 87 % as determined by SDS-PAGE

### Endotoxin

< 1.0 EU per  $\mu\text{g}$  of the protein as determined by the LAL method

### Stability

Samples are stable for up to twelve months from date of receipt at  $-70^{\circ}\text{C}$

## Predicted N terminal

Ser 20

## Molecular Mass

The recombinant human NRG1/Fc chimera is a disulfide-linked homodimeric protein. The reduced monomer consists of 463 amino acids and has a calculated molecular mass of 51 kDa. In SDS-PAGE under reducing conditions, the apparent molecular mass of rh NRG1/Fc monomer is approximately 60 kDa.

## Formulation

Lyophilized from sterile PBS, pH 7.4

1. 5 % trehalose and mannitol are added as protectants before lyophilization.
2. Please contact us for any concerns or special requirements.

## Usage Guide

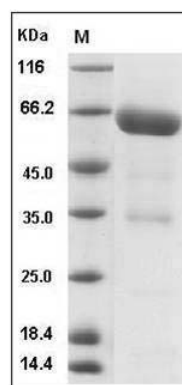
### Storage

Store it under sterile conditions at  $-20^{\circ}\text{C}$  to  $-80^{\circ}\text{C}$ . It is recommended that the protein be aliquoted for optimal storage. Avoid repeated freeze-thaw cycles.

### Reconstitution

Adding sterile water, prepare a stock solution of 0.25 mg/ml. Concentration is measured by UV-Vis.

## SDS-PAGE



# Human NRG1 (Fc Tag) recombinant protein



Catalog Number: 503907

---

Human NRG1-alpha Protein (Fc Tag) SDS-PAGE