

# EXOSC10 antibody



Catalog Number: 110507

## Product name

EXOSC10 antibody

## Specificity

Human, Mouse; other species not tested.

## Antibody description

EXOSC10 Rabbit Polyclonal antibody. Positive IP detected in HeLa cells. Positive WB detected in HeLa cells, mouse spleen tissue. Positive IF detected in HeLa cells, NIH/3T3 cells. Positive IHC detected in human spleen tissue, human brain tissue, human heart tissue, human kidney tissue, human liver tissue, human lung tissue, human ovary tissue, human placenta tissue, human skin tissue, human testis tissue. Observed molecular weight by Western-blot: 100 kDa

## Preparation

This antibody was obtained by immunization of EXOSC10 recombinant protein (Accession Number: NM\_001001998). Purification method: Antigen affinity purified.

## Formulation

PBS with 0.02% sodium azide and 50% glycerol pH 7.3.

## Storage

Store at -20°C. DO NOT ALIQUOT

## Clonality

Polyclonal

## Ig Type

Rabbit IgG

## Applications

ELISA, WB, IHC, IF, IP

## Dilutions

Recommended Dilution:

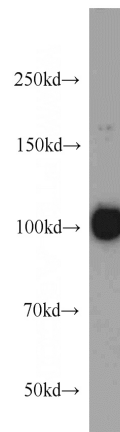
WB: 1:500-1:5000

IP: 1:200-1:2000

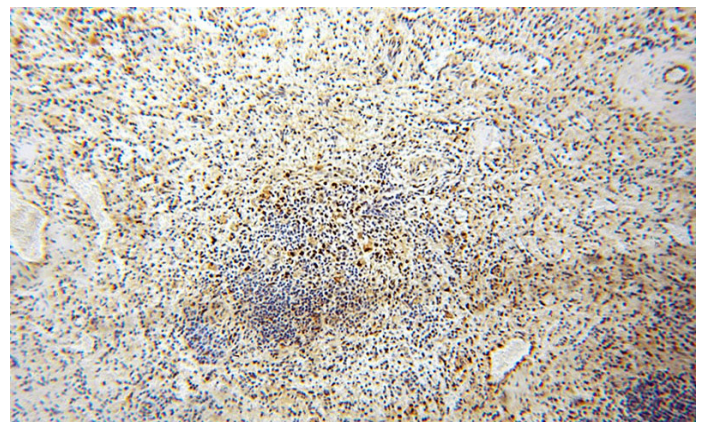
IHC: 1:20-1:200

IF: 1:20-1:200

## Validations



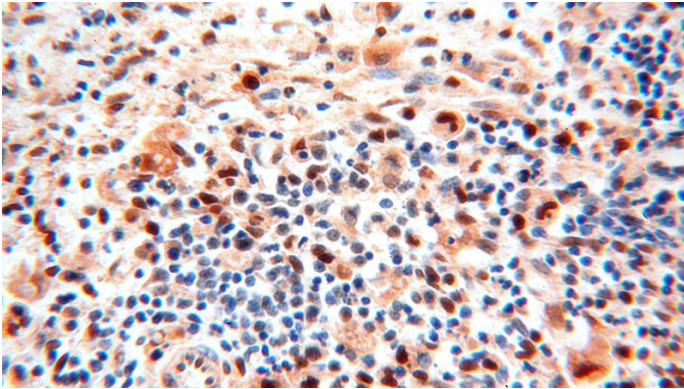
HeLa cells were subjected to SDS PAGE followed by western blot with Catalog No:110507(EXOSC10 antibody) at dilution of 1:1000



Immunohistochemical of paraffin-embedded human spleen using Catalog No:110507(EXOSC10 antibody) at dilution of 1:50 (under 10x lens)

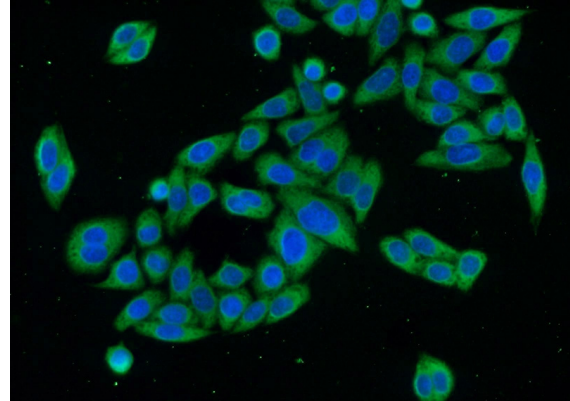
# EXOSC10 antibody

Catalog Number: 110507



Immunohistochemical of paraffin-embedded human spleen using Catalog No:110507(EXOSC10 antibody) at dilution of 1:50 (under 40x lens)

IP Result of anti-EXOSC10 (IP:Catalog No:110507, 4ug; Detection:Catalog No:110507 1:700) with HeLa cells lysate 1200ug.



Immunofluorescent analysis of HeLa cells using Catalog No:110507(EXOSC10 Antibody) at dilution of 1:50 and Alexa Fluor 488-conjugated AffiniPure Goat Anti-Rabbit IgG(H+L)

