

Anti-HA-tag Rabbit antibody



Catalog Number: 169107

Product name

Anti-HA-tag Rabbit antibody

Specificity

ALL

Antibody description

HA-tag Rabbit polyclonal antibody

Preparation

Antigen: HA synthetic peptide conjugated to KLH.

Formulation

Liquid in PBS containing 50% glycerol, 0.5% BSA and 0.05% sodium azide.

Storage

Store at 4°C short term. Store at -20°C long term. Avoid freeze / thaw cycle.

Clonality

Polyclonal

Ig Type

Rabbit IgG

Applications

WB, IP, ELISA

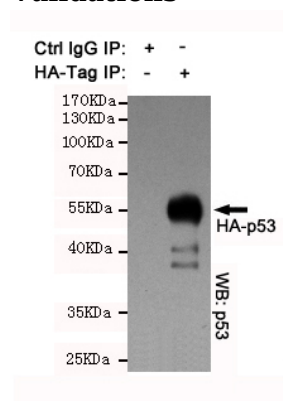
Dilutions

WB: 1/1000 - 1/3000

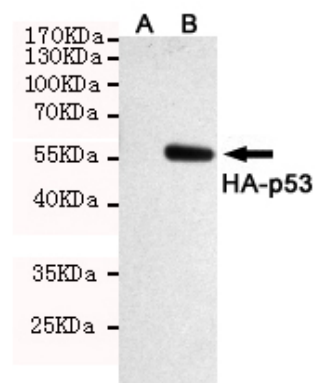
ELISA: 1/20000

IP: 1/300

Validations



Immunoprecipitation analysis of CHO K1 cell lysates transfected with HA-tagged p53 using HA-Tag Rabbit pAb (1:100 diluted). p53 mouse mAb (200240-6C4) was used for the western blot



analysis (1:1000 diluted).

Western blot analysis of extracts from CHO K1 cells transfected with empty vector (A) or HA-tagged p53 (B) using HA-Tag Rabbit pAb (1:1000 diluted).