

# Anti-FOXO1 Rabbit antibody



Catalog Number: 167107

## Product name

Anti-FOXO1 Rabbit antibody

## Specificity

Human, Mouse, Rat, Pig

## Antibody description

FOXO1 Rabbit polyclonal antibody

## Preparation

Antigen: The antiserum was produced against synthesized peptide derived from human FKHR. AA range:223-272

## Formulation

Liquid in PBS containing 50% glycerol, 0.5% BSA and 0.02% sodium azide.

## Storage

Store at 4°C short term. Store at -20°C long term. Avoid freeze / thaw cycle.

## Clonality

Polyclonal

## Ig Type

Rabbit IgG

## Applications

WB, IHC-P, ICC/IF, ELISA, ChIP

## Dilutions

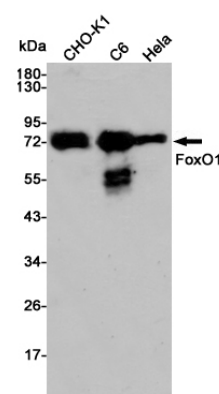
WB: 1/500 - 1/2000

IHC: 1/100 - 1/300

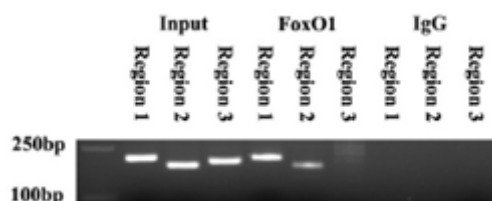
IF: 1/200 - 1/1000

ELISA: 1/20000

## Validations



Western blot detection of FoxO1 in CHO-K1, C6 and HeLa cell lysates using FoxO1 rabbit pAb (1:500 diluted). Predicted band size: 70kDa. Observed band size: 70kDa.



ChIP-PCR detected the FoxO1 binding sites in the AdipoQ promoter region.