

# PPP2R5E antibody



Catalog Number: 114107

## Product name

PPP2R5E antibody

IHC: 1:20-1:200

IF: 1:20-1:200

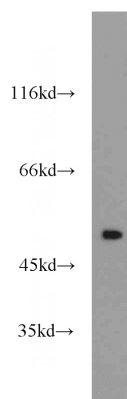
## Specificity

Human; other species not tested.

## Validations

## Antibody description

PPP2R5E Rabbit Polyclonal antibody. Positive IF detected in HeLa cells. Positive IHC detected in human cervical cancer tissue. Positive WB detected in HeLa cells. Observed molecular weight by Western-blot: 51 kDa



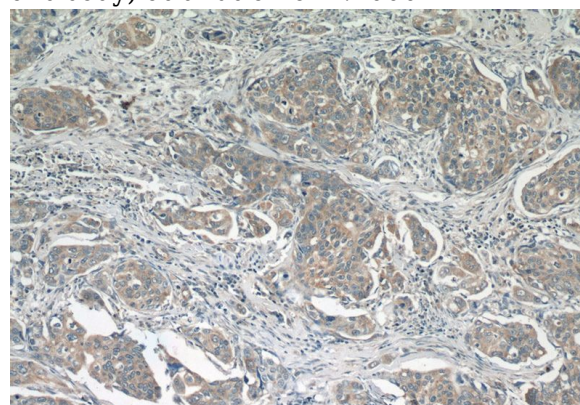
## Preparation

This antibody was obtained by immunization of PPP2R5E recombinant protein (Accession Number: NM\_001282179). Purification method: Antigen Affinity purified.

HeLa cells were subjected to SDS PAGE followed by western blot with Catalog No:114107(PPP2R5E antibody) at dilution of 1:1000

## Formulation

PBS with 0.02% sodium azide and 50% glycerol pH 7.3.



## Storage

Store at -20°C. DO NOT ALIQUOT

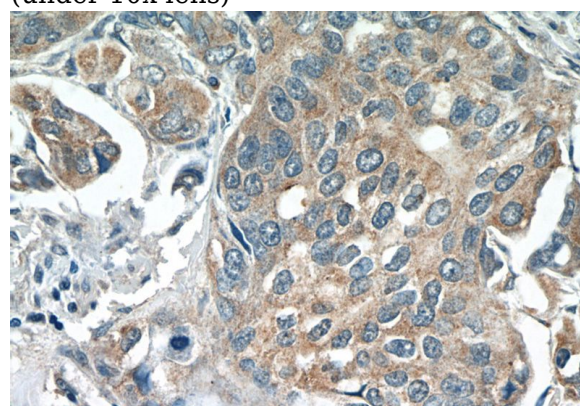
## Clonality

Polyclonal

Immunohistochemistry of paraffin-embedded human cervical cancer tissue slide using Catalog No:114107(PPP2R5E Antibody) at dilution of 1:50 (under 10x lens)

## Ig Type

Rabbit IgG



## Applications

ELISA, WB, IHC, IF

## Dilutions

Recommended Dilution:

WB: 1:500-1:5000

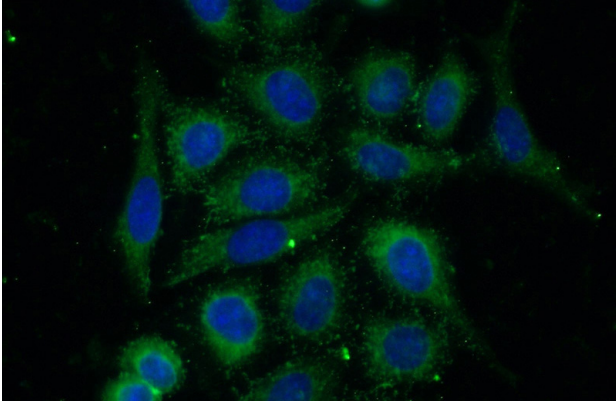
Immunohistochemistry of paraffin-embedded

# PPP2R5E antibody

Catalog Number: 114107

---

human cervical cancer tissue slide using Catalog No:114107(PPP2R5E Antibody) at dilution of 1:50 (under 40x lens)



Immunofluorescent analysis of (-20oc Ethanol) fixed HeLa cells using Catalog No:114107(PPP2R5E Antibody) at dilution of 1:50 and Alexa Fluor 488-conjugated AffiniPure Goat Anti-Rabbit IgG(H+L)