

# Human PRDM2/RIZ1 (GST Tag) recombinant protein



Catalog Number: 504107

## General Information

### Gene Name Synonym

GATA-3-binding protein G3B; Lysine N-methyltransferase 8; MTB-ZF; MTE-binding protein; PR domain-containing protein 2; Retinoblastoma protein-interacting zinc finger protein; Zinc finger protein RIZ

### Protein Construction

A DNA sequence encoding the N-terminal segment of human PRDM2 (NP\_036363.2) (Met 1-Ala 200), containing the SET domain, was fused with the GST tag at the N-terminus.

### Organism

Human

### Expression Host

E. coli

## QC Testing

### Purity

> 86 % as determined by SDS-PAGE

### Endotoxin

Please contact us for more information.

### Stability

Samples are stable for up to twelve months from date of receipt at -70°C

### Predicted N terminal

Met

### Molecular Mass

The recombinant human PRDM2/GST chimera consists of 432 amino acids and predicts a molecular mass of 49.6 kDa as estimated in SDS-PAGE under reducing conditions.

### Formulation

Lyophilized from sterile 20mM Tris, 150mM NaCl, 0.5mM DTT, 0.5mM GSH, pH 8.0

1. 5 % trehalose and mannitol are added as protectants before lyophilization.
2. Please contact us for any concerns or special requirements.

## Usage Guide

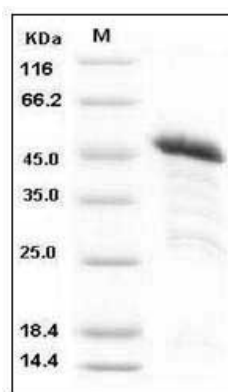
### Storage

Store it under sterile conditions at -20°C to -80°C. It is recommended that the protein be aliquoted for optimal storage. Avoid repeated freeze-thaw cycles.

### Reconstitution

Adding sterile water, prepare a stock solution of 0.25 mg/ml. Concentration is measured by UV-Vis.

### SDS-PAGE



Human PRDM2 / RIZ1 Protein (GST Tag) SDS-PAGE