

# Human NCR3LG1/B7H6 (Fc Tag) recombinant protein



Catalog Number: 503107

## General Information

### Gene Name Synonym

B7 homolog 6

### Protein Construction

A DNA sequence encoding the human NCR3LG1 (NP\_001189368.1) (Met1-Ser262) was expressed with the Fc region of human IgG1 at the C-terminus.

### Organism

Human

### Expression Host

Human Cells

## QC Testing

### Purity

> 95 % as determined by SDS-PAGE.

### Endotoxin

<1.0 EU per  $\mu\text{g}$  protein as determined by the LAL method.

### Stability

Samples are stable for up to twelve months from date of receipt at  $-70^{\circ}\text{C}$

### Predicted N terminal

Asp 25

### Molecular Mass

The recombinant human NCR3LG1 consists 476 amino acids and predicts a molecular mass of 53.4 kDa.

### Formulation

Lyophilized from sterile PBS, pH 7.4.

1. 5 % trehalose and mannitol are added as protectants before lyophilization.

2. Please contact us for any concerns or special requirements.

## Usage Guide

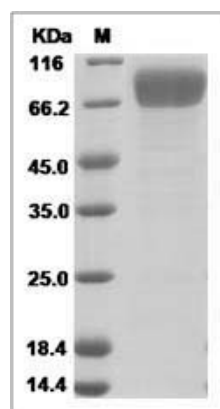
### Storage

Store it under sterile conditions at  $-20^{\circ}\text{C}$  to  $-80^{\circ}\text{C}$ . It is recommended that the protein be aliquoted for optimal storage. Avoid repeated freeze-thaw cycles.

### Reconstitution

Adding sterile water, prepare a stock solution of 0.25 mg/ml. Concentration is measured by UV-Vis.

### SDS-PAGE



Human NCR3LG1 / B7-H6 / B7H6 Protein (Fc Tag)