

Anti-SUZ12 Rabbit antibody



Catalog Number: 167807

Product name

Anti-SUZ12 Rabbit antibody

Specificity

Human, Mouse, Rat

Antibody description

SUZ12 Rabbit monoclonal antibody

Preparation

Antigen: A synthetic peptide of human SUZ12

Formulation

50nM Tris-Glycine(pH 7.4), 0.15M NaCl,
40%Glycerol, 0.01% sodium azide and 0.05% BSA

Storage

Store at 4°C short term. Store at -20°C long term.
Avoid freeze / thaw cycle.

Clonality

Monoclonal

Ig Type

Rabbit IgG

Applications

WB, ICC/IF, FC, IP

Dilutions

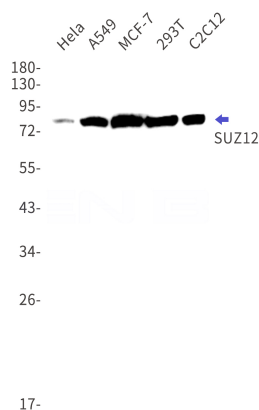
WB: 1/1000

ICC/IF: 1/20

FC: 1/200

IP: 1/20

Validations



Western blot detection of SUZ12 in HeLa, A549, MCF-7, 293T, C2C12 cell lysates using SUZ12 Rabbit mAb(1:1000 diluted). Predicted band size: 83kDa. Observed band size: 83kDa.