

Anti-NKG2A / NKG2 / CD159A / KLRC1 antibody



Catalog Number: 105807

Product name

Anti-NKG2A / NKG2 / CD159A / KLRC1 antibody

Immunogen

[Mouse NKG2A / NKG2 / CD159A / KLRC1 \(His Tag\) recombinant protein](#)

Specificity

Mouse NKG2A / NKG2 / CD159A / KLRC1

Antibody description

Rabbit polyclonal to NKG2A / NKG2 / CD159A / KLRC1

Preparation

Produced in rabbits immunized with purified, recombinant Mouse NKG2A / NKG2 / CD159A / KLRC1 (rM NKG2A / NKG2 / CD159A / KLRC1; AAD24969.1; Ala94-Ile244). NKG2A / NKG2 / CD159A / KLRC1 specific IgG was purified by Mouse NKG2A / NKG2 / CD159A / KLRC1 affinity chromatography.

Formulation

0.2 µm filtered solution in PBS

Storage

This antibody can be stored at 2°C-8°C for one month without detectable loss of activity. Antibody products are stable for twelve months from date of receipt when stored at -20°C to -80°C.

Preservative-Free.

Sodium azide is recommended to avoid

contamination (final concentration 0.05%-0.1%). It is toxic to cells and should be disposed of properly. Avoid repeated freeze-thaw cycles.

Clonality

Polyclonal

Ig Type

Rabbit IgG

Applications

ELISA, WB

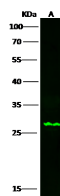
Dilutions

WB: 5-10 µg/ml

ELISA: 0.1-0.2 µg/ml

This antibody can be used at 0.1-0.2 µg/ml with the appropriate secondary reagents to detect Mouse NKG2A / NKG2 / CD159A / KLRC1.

Validations



Lanes	A
Items	
Sample (Membrane Lysate)	Jurkat
Sample Volume (µg/lane)	30
Gel	13% SDS-PAGE reducing gel
Recommended Concentration	5-10 µg/ml
Secondary Antibody	Dylight 800 labeled Antibody to Rabbit IgG (H+L), at 1:5000 dilution.
Developed using Odyssey imaging system.	
Explanation	Predicted band size : 26 kDa Observed band size : 26 kDa

NKG2A / NKG2 / CD159A / KLRC1 Antibody,
Rabbit PAb, Antigen Affinity Purified, Western blot