

# RPH3AL antibody

Catalog Number: 114807

## Product name

RPH3AL antibody

## Specificity

Human; other species not tested.

## Antibody description

RPH3AL Rabbit Polyclonal antibody. Positive WB detected in human liver tissue, L02 cells. Positive IP detected in HepG2 cells. Observed molecular weight by Western-blot: 38kd

## Preparation

This antibody was obtained by immunization of RPH3AL recombinant protein (Accession Number: NM\_001190412). Purification method: Antigen affinity purified.

## Formulation

PBS with 0.02% sodium azide and 50% glycerol pH 7.3.

## Storage

Store at -20°C. DO NOT ALIQUOT

## Clonality

Polyclonal

## Ig Type

Rabbit IgG

## Applications

ELISA, WB, IP

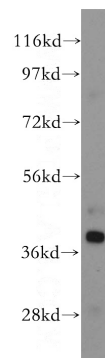
## Dilutions

Recommended Dilution:

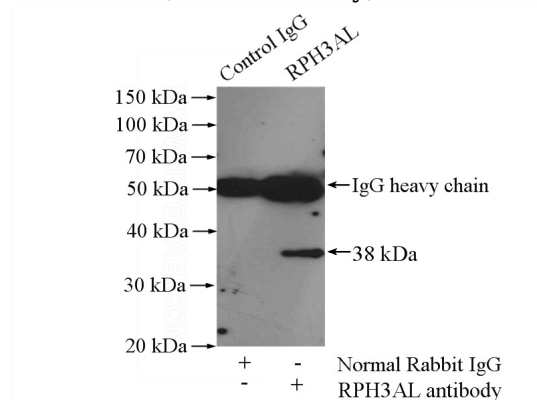
WB: 1:500-1:5000

IP: 1:200-1:2000

## Validations



human liver tissue were subjected to SDS PAGE followed by western blot with Catalog No:114807(Noc2 antibody) at dilution of 1:500



IP Result of anti-Noc2 (IP:Catalog No:114807, 4ug; Detection:Catalog No:114807 1:500) with HepG2 cells lysate 2400ug.