

General Information

Protein Construction

A DNA sequence encoding the human KIR2DL4 (ADY38409.1)(Met1-His242) was expressed with six amino acids (LEVLFQ) at the C-terminus was expressed and purified.

Organism

Human

Expression Host

CHO Cells

QC Testing

Purity

> 85 % as determined by SDS-PAGE

Endotoxin

< 1.0 EU per μg of the protein as determined by the LAL method

Stability

Samples are stable for up to twelve months from date of receipt at -70°C

Predicted N terminal

Trp 24

Molecular Mass

The recombinant human KIR2DL4 consists of 228 amino acids and predicts a molecular mass of 25.1

KDa. It migrates as an approximately 33-37 KDa band in SDS-PAGE under reducing conditions.

Formulation

Lyophilized from sterile PBS, pH 7.4.

1. 5 % trehalose and mannitol are added as protectants before lyophilization.

2. Please contact us for any concerns or special requirements.

Usage Guide

Storage

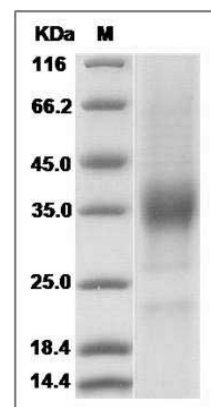
Store it under sterile conditions at -20°C to -80°C .

It is recommended that the protein be aliquoted for optimal storage. Avoid repeated freeze-thaw cycles.

Reconstitution

Adding sterile water, prepare a stock solution of 0.25 mg/ml. Concentration is measured by UV-Vis.

SDS-PAGE



Human KIR2DL4 / CD158D Protein SDS-PAGE