

# Human CCL8/MCP-2 (SUMO Tag) recombinant protein



Catalog Number: 503807

## General Information

### Gene Name Synonym

HC14; Monocyte chemoattractant protein 2; Monocyte chemotactic protein 2; Small-inducible cytokine A8; MCP-2(6-76)

### Protein Construction

A DNA sequence encoding the human CCL8 (P80075-1) (Gln 24-Pro 99) was fused with the SUMO tag at the N-terminus.

### Organism

Human

### Expression Host

E. coli

## QC Testing

### Purity

> 90 % as determined by SDS-PAGE

### Endotoxin

Please contact us for more information.

### Stability

Samples are stable for up to twelve months from date of receipt at -70°C

### Predicted N terminal

Met

### Molecular Mass

The recombinant human CCL8 consisting of 187 amino acids and has a calculated molecular mass of 21.7 kDa. The apparent molecular mass of the protein is approximately 30 kDa in SDS-PAGE under reducing conditions.

### Formulation

Lyophilized from sterile PBS, pH 7.4

1. 5 % trehalose and mannitol are added as protectants before lyophilization.
2. Please contact us for any concerns or special requirements.

## Usage Guide

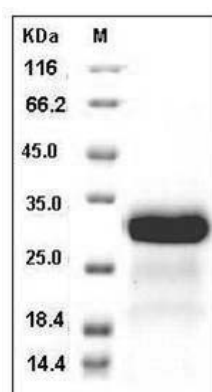
### Storage

Store it under sterile conditions at -20°C to -80°C. It is recommended that the protein be aliquoted for optimal storage. Avoid repeated freeze-thaw cycles.

### Reconstitution

Adding sterile water, prepare a stock solution of 0.25 mg/ml. Concentration is measured by UV-Vis.

### SDS-PAGE



Human CCL8 / MCP-2 Protein (SUMO Tag) SDS-PAGE