

# CLTC antibody

Catalog Number: 109407

## Product name

CLTC antibody

## Specificity

Human; other species not tested.

## Antibody description

CLTC Rabbit Polyclonal antibody. Positive IF detected in HeLa cells. Positive WB detected in HL-60 cells, Raji cells. Observed molecular weight by Western-blot: 180 kDa

## Preparation

This antibody was obtained by immunization of CLTC recombinant protein (Accession Number: NM\_004859). Purification method: Antigen affinity purified.

## Formulation

PBS with 0.1% sodium azide and 50% glycerol pH 7.3.

## Storage

Store at -20°C. DO NOT ALIQUOT

## Clonality

Polyclonal

## Ig Type

Rabbit IgG

## Applications

ELISA, WB, IF

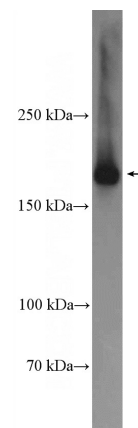
## Dilutions

Recommended Dilution:

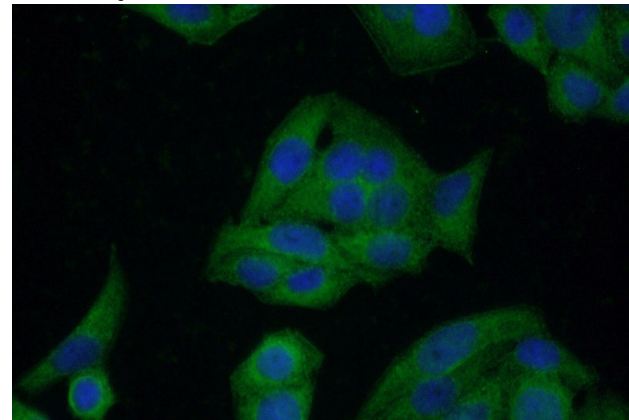
WB: 1:1000-1:10000

IF: 1:50-1:500

## Validations



HL-60 cells were subjected to SDS PAGE followed by western blot with Catalog No:109407(CLTC Antibody) at dilution of 1:2000



Immunofluorescent analysis of (-20oc Ethanol) fixed HeLa cells using Catalog No:109407(CLTC Antibody) at dilution of 1:50 and Alexa Fluor 488-conjugated AffiniPure Goat Anti-Rabbit IgG(H+L)