

SMYD2 antibody



Catalog Number: 115407

Product name

SMYD2 antibody

IHC: 1:20-1:200

IF: 1:10-1:100

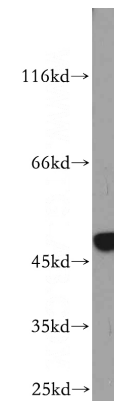
Specificity

Human, Mouse; other species not tested.

Validations

Antibody description

SMYD2 Rabbit Polyclonal antibody. Positive IF detected in Hela cells. Positive IHC detected in human heart tissue. Positive WB detected in mouse skeletal muscle tissue, HepG2 cells, Jurkat cells, mouse heart tissue. Observed molecular weight by Western-blot: 50kd



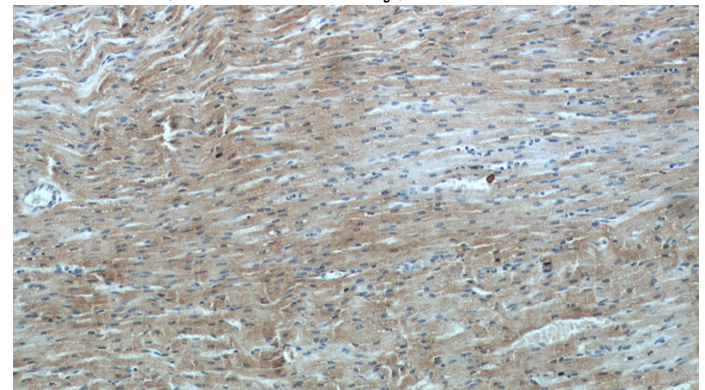
Preparation

This antibody was obtained by immunization of SMYD2 recombinant protein (Accession Number: XM_047425702). Purification method: Antigen affinity purified.

mouse skeletal muscle tissue were subjected to SDS PAGE followed by western blot with Catalog No:115407(SMYD2 antibody) at dilution of 1:500

Formulation

PBS with 0.02% sodium azide and 50% glycerol pH 7.3.



Storage

Store at -20°C. DO NOT ALIQUOT

Clonality

Polyclonal

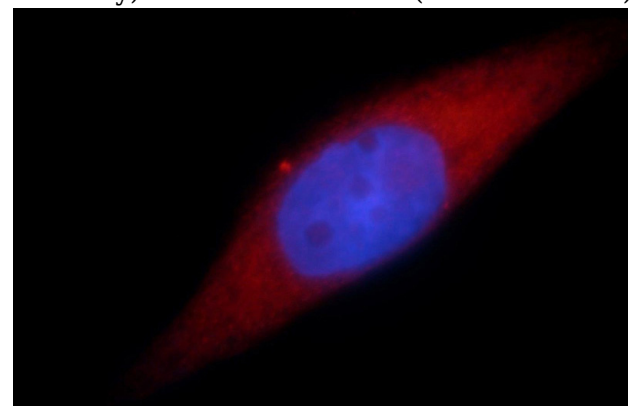
Immunohistochemical of paraffin-embedded human heart using Catalog No:115407(SMYD2 antibody) at dilution of 1:100 (under 10x lens)

Ig Type

Rabbit IgG

Applications

ELISA, WB, IF, IHC



Dilutions

Recommended Dilution:

WB: 1:500-1:5000

Immunofluorescent analysis of Hela cells, using SMYD2 antibody Catalog No:115407 at 1:25

SMYD2 antibody



Catalog Number: 115407

dilution and Rhodamine-labeled goat anti-rabbit

IgG (red). Blue pseudocolor = DAPI (fluorescent DNA dye).