

# LYN antibody



Catalog Number: 112407

## Product name

LYN antibody

## Specificity

Human; other species not tested.

## Antibody description

LYN Rabbit Polyclonal antibody. Positive WB detected in HeLa cells, HL-60 cells, Jurkat cells, K-562 cells, L02 cells. Positive IP detected in HeLa cells. Positive IF detected in HeLa cells. Positive IHC detected in human kidney tissue, human hepat°Cirrhosis tissue. Positive FC detected in Jurkat cells. Observed molecular weight by Western-blot: 53-56 kDa,66-70 kDa

## Preparation

This antibody was obtained by immunization of LYN recombinant protein (Accession Number: NM\_002350). Purification method: Antigen affinity purified.

## Formulation

PBS with 0.1% sodium azide and 50% glycerol pH 7.3.

## Storage

Store at -20°C. DO NOT ALIQUOT

## Clonality

Polyclonal

## Ig Type

Rabbit IgG

## Applications

ELISA, WB, IHC, FC, IF, IP

## Dilutions

Recommended Dilution:

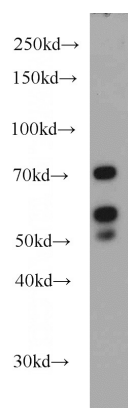
WB: 1:500-1:5000

IP: 1:500-1:5000

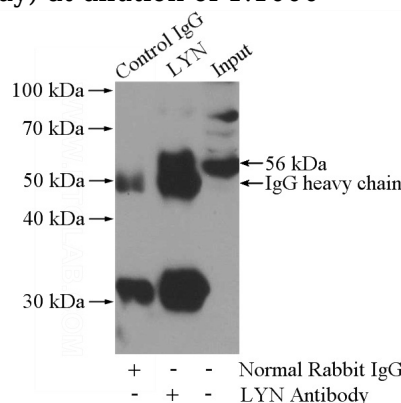
IHC: 1:20-1:200

IF: 1:20-1:200

## Validations



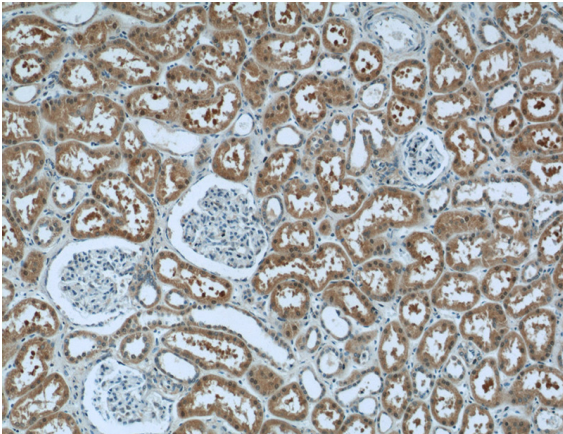
HeLa cells were subjected to SDS PAGE followed by western blot with Catalog No:112407(LYN antibody) at dilution of 1:1000



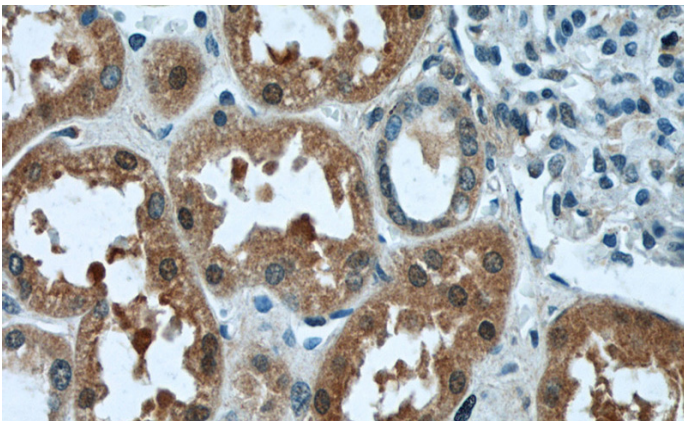
IP Result of anti-LYN (IP:Catalog No:112407, 4ug; Detection:Catalog No:112407 1:1000) with HeLa cells lysate 1200ug.

# LYN antibody

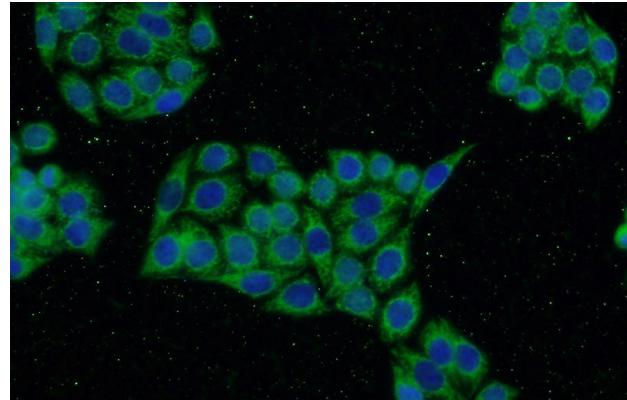
Catalog Number: 112407



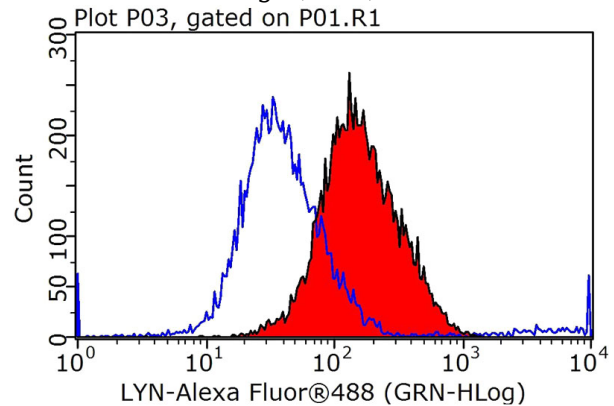
Immunohistochemistry of paraffin-embedded human kidney tissue slide using Catalog No:112407(LYN Antibody) at dilution of 1:50 (under 10x lens)



Immunohistochemistry of paraffin-embedded human kidney tissue slide using Catalog No:112407(LYN Antibody) at dilution of 1:50 (under 40x lens)



Immunofluorescent analysis of HeLa cells using Catalog No:112407(LYN Antibody) at dilution of 1:50 and Alexa Fluor 488-conjugated AffiniPure Goat Anti-Rabbit IgG(H+L)



1X10<sup>6</sup> Jurkat cells were stained with 0.2ug LYN antibody (Catalog No:112407, red) and control antibody (blue). Fixed with 90% MeOH blocked with 3% BSA (30 min). Alexa Fluor 488-conjugated AffiniPure Goat Anti-Rabbit IgG(H+L) with dilution 1:1000.