

ERCC1 antibody

Catalog Number: 110407

Product name

ERCC1 antibody

Specificity

Human, Mouse, Rat; other species not tested.

Antibody description

ERCC1 Rabbit Polyclonal antibody. Positive IHC detected in human testis tissue, human brain tissue, human ovary tissue, human skin tissue, human spleen tissue. Positive IP detected in MCF-7 cells. Positive WB detected in MCF7 cells, COLO 320 cells, human kidney tissue, SKOV-3 cells. Observed molecular weight by Western-blot: 36-38kd

Preparation

This antibody was obtained by immunization of ERCC1 recombinant protein (Accession Number: NM_001369408). Purification method: Antigen affinity purified.

Formulation

PBS with 0.02% sodium azide and 50% glycerol pH 7.3.

Storage

Store at -20°C. DO NOT ALIQUOT

Clonality

Polyclonal

Ig Type

Rabbit IgG

Applications

ELISA, WB, IHC, IP

Dilutions

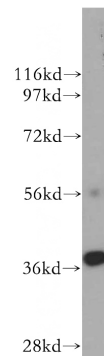
Recommended Dilution:

WB: 1:500-1:5000

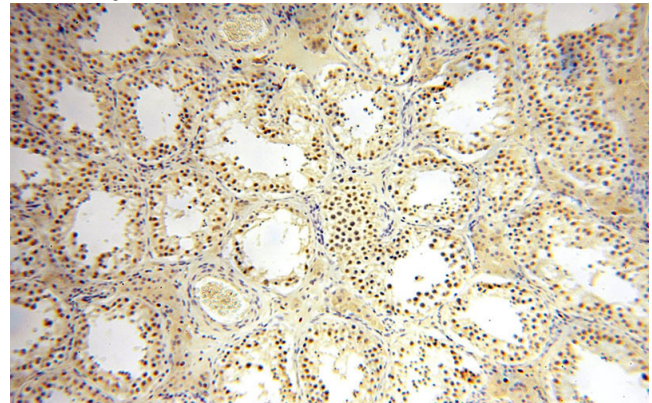
IP: 1:200-1:1000

IHC: 1:20-1:200

Validations



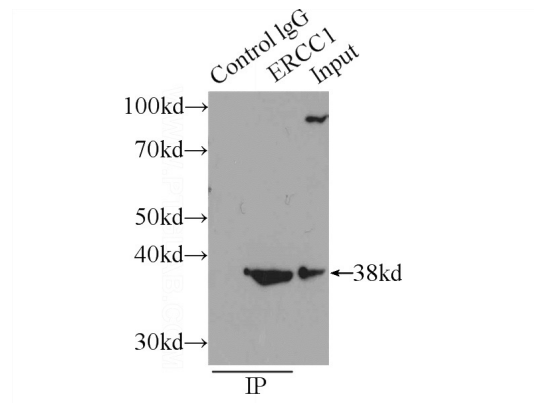
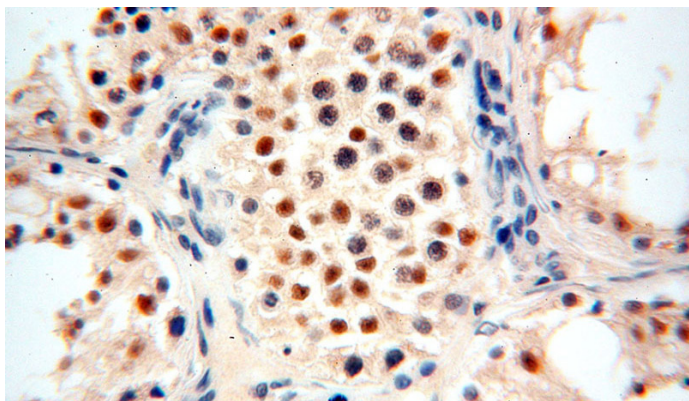
MCF7 cells were subjected to SDS PAGE followed by western blot with Catalog No:110407(ERCC1 antibody) at dilution of 1:300



Immunohistochemical of paraffin-embedded human testis using Catalog No:110407(ERCC1 antibody) at dilution of 1:50 (under 10x lens)

ERCC1 antibody

Catalog Number: 110407



Immunohistochemical of paraffin-embedded human testis using Catalog No:110407(ERCC1 antibody) at dilution of 1:50 (under 40x lens)

IP Result of anti-ERCC1 (IP:Catalog No:110407, 3ug; Detection:Catalog No:110407 1:300) with MCF-7 cells lysate 1600ug.