

## General Information

### Gene Name Synonym

Leukemia inhibitory factor receptor, isoform CRA\_a

### Protein Construction

A DNA sequence encoding the rat LIFR (G3V7K2) (Met1-Ser829) was expressed with a polyhistidine tag at the C-terminus.

### Organism

Rat

### Expression Host

Human Cells

## QC Testing

### Activity

1. Measured by its ability to bind mouse LIF-Fc (Cat:50755-M02H) in a functional ELISA.
2. Measured by its ability to inhibit the recombinant human LIF mediated inhibition in the M1 mouse myeloid leukemia cells. The ED<sub>50</sub> for this effect is typically 8-40 ng/mL in the presence of 2 ng/mL recombinant human LIF.

### Purity

> 95 % as determined by SDS-PAGE

### Endotoxin

< 1.0 EU per µg of the protein as determined by the LAL method

### Stability

Samples are stable for up to twelve months from date of receipt at -70°C

### Predicted N terminal

Leu 44

### Molecular Mass

The recombinant rat LIFR comprises 797 amino acids and predicts a molecular mass of 90 kDa. The apparent molecular mass of the recombinant protein is approximately 116 kDa in SDS-PAGE under reducing conditions due to glycosylation.

### Formulation

Lyophilized from sterile PBS, pH 7.4

1. 5 % trehalose and mannitol are added as protectants before lyophilization.
2. Please contact us for any concerns or special requirements.

## Usage Guide

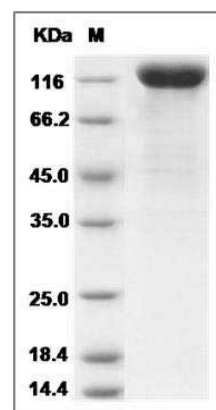
### Storage

Store it under sterile conditions at -20°C to -80°C. It is recommended that the protein be aliquoted for optimal storage. Avoid repeated freeze-thaw cycles.

### Reconstitution

Adding sterile water, prepare a stock solution of 0.25 mg/ml. Concentration is measured by UV-Vis.

### SDS-PAGE



Rat LIFR Protein (His Tag) SDS-PAGE