

Lirilumab reference antibody



Catalog Number: 177222

Product name

Lirilumab reference antibody

Specificity

Human KIR

Antibody description

Anti-KIR Antibody (Lirilumab)

Preparation

Recombinant expression and purified from CHO cells.

Formulation

0.1 M Pro-Ac, 20 mM Arg, pH 5.0

Storage

-80°C for 2 years under sterile conditions; -20°C for 1 year under sterile conditions; Avoid repeated freeze-thaw cycles.

Clonality

Monoclonal

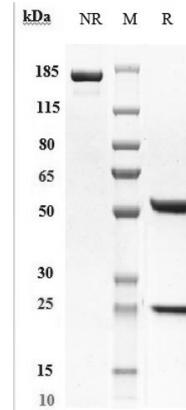
Ig Type

IgG4

Applications

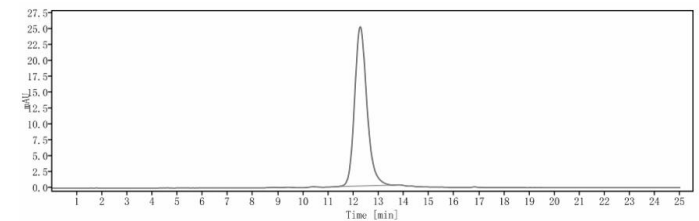
ELISA

Validations



SDS-PAGE

Anti-KIR Antibody (lirilumab) on SDS-PAGE under reducing (R) condition. The purity of the protein is greater than 95%.



SEC-HPLC

The purity of Anti-KIR Antibody (lirilumab) is 100%, determined by SEC-HPLC.