

Elotuzumab reference antibody



Catalog Number: 177162

Product name

Elotuzumab reference antibody

Specificity

Human SLAMF7 / CS1

Antibody description

Anti-SLAMF7 / CS1 Antibody (Elotuzumab)

Preparation

Recombinant expression and purified from CHO cells.

Formulation

0.1 M Pro-Ac, 20 mM Arg, pH 5.0

Storage

-80°C for 2 years under sterile conditions; -20°C for 1 year under sterile conditions; Avoid repeated freeze-thaw cycles.

Clonality

Monoclonal

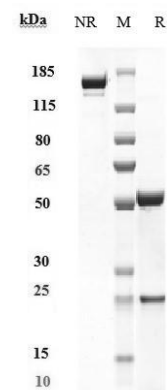
Ig Type

IgG1

Applications

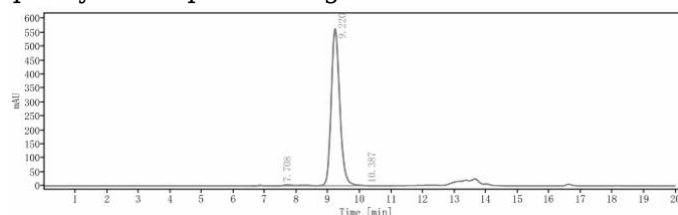
ELISA

Validations



SDS-PAGE

Anti-SLAMF7 / CS1 Antibody (elotuzumab) on SDS-PAGE under reducing (R) condition. The purity of the protein is greater than 90%.



SEC-HPLC

The purity of Anti-SLAMF7 / CS1 Antibody (elotuzumab) is more than 95%, determined by SEC-HPLC.