

Anetumab reference antibody



Catalog Number: 177139

Product name

Anetumab reference antibody

Specificity

Human Mesothelin

Antibody description

Anti-Mesothelin Antibody (Anetumab)

Preparation

Recombinant expression and purified from CHO cells.

Formulation

0.1 M Pro-Ac, 20 mM Arg, pH 5.0

Storage

-80°C for 2 years under sterile conditions; -20°C for 1 year under sterile conditions; Avoid repeated freeze-thaw cycles.

Clonality

Monoclonal

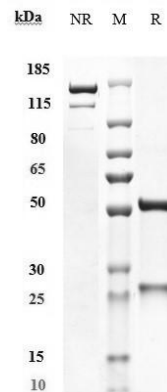
Ig Type

IgG1

Applications

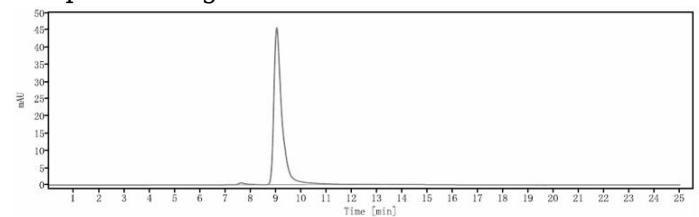
ELISA

Validations



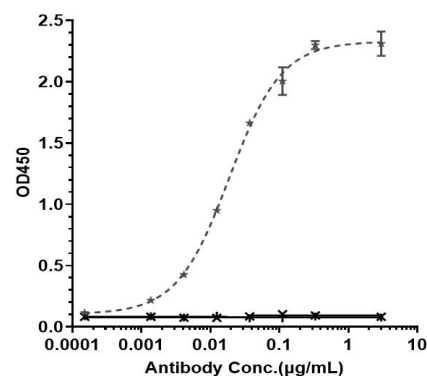
SDS-PAGE

Anti-Mesothelin Antibody (anetumab) on SDS-PAGE under reducing (R) condition. The purity of the protein is greater than 95%.



SEC-HPLC

The purity of Anti-Mesothelin Antibody (anetumab) is 98.58%, determined by SEC-HPLC.



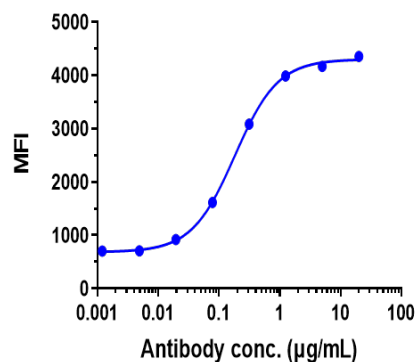
Bioactivity: ELISA

Immobilized human Mesothelin His at 2 µg/mL can bind Anti-Mesothelin Antibody (anetumab), $EC_{50}=0.01877$ µg/mL.

Anetumab reference antibody



Catalog Number: 177139



Bioactivity: FACS

ASPC-1 cells were stained with Anti-Mesothelin Antibody (anetumab) and negative control protein respectively, washed and then followed by PE and analyzed with FACS, $\text{EC}_{50}=0.1822 \text{ ug/mL}$.