

# Eldelumab reference antibody



Catalog Number: 177111

## Product name

Eldelumab reference antibody

## Specificity

Human CXCL10 / IP-10

## Antibody description

Anti-CXCL10 / IP-10 Antibody (Eldelumab)

## Preparation

Recombinant expression and purified from CHO cells.

## Formulation

0.1 M Pro-Ac, 20 mM Arg, pH 5.0

## Storage

-80°C for 2 years under sterile conditions; -20°C for 1 year under sterile conditions; Avoid repeated freeze-thaw cycles.

## Clonality

Monoclonal

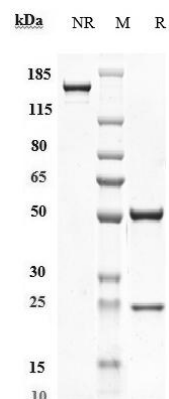
## Ig Type

IgG1

## Applications

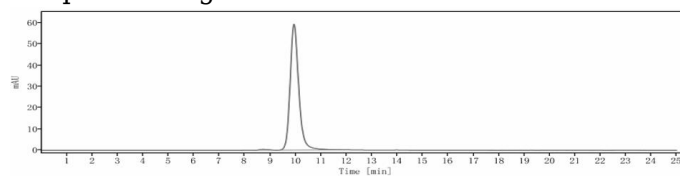
ELISA

## Validations



## SDS-PAGE

Anti-CXCL10 / IP-10 Antibody (eldelumab) on SDS-PAGE under reducing (R) condition. The purity of the protein is greater than 95%.



## SEC-HPLC

The purity of Anti-CXCL10 / IP-10 Antibody (eldelumab) is 99.28%, determined by SEC-HPLC.