

# Laprituximab emtansine reference antibody



Catalog Number: 177084

## Product name

Laprituximab emtansine reference antibody

## Specificity

Human ERBB1 / EGFR / HER1

## Antibody description

Anti-ERBB1 / EGFR / HER1 Antibody  
(Laprituximab emtansine)

## Preparation

Recombinant expression and purified from CHO cells.

## Formulation

0.1 M Pro-Ac, 20 mM Arg, pH 5.0

## Storage

-80°C for 2 years under sterile conditions; -20°C for 1 year under sterile conditions; Avoid repeated freeze-thaw cycles.

## Clonality

Monoclonal

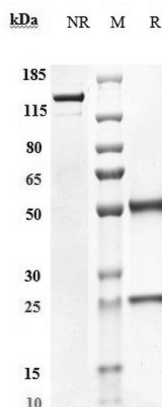
## Ig Type

IgG1

## Applications

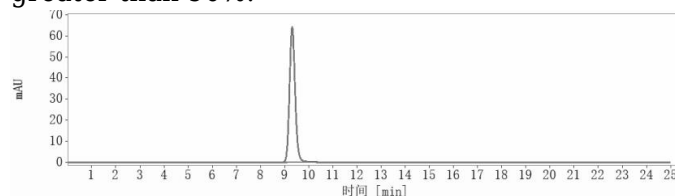
ELISA

## Validations



## SDS-PAGE

Anti-ERBB1 / EGFR / HER1 Antibody (Laprituximab emtansine) on SDS-PAGE under reducing (R) condition. The purity of the protein is greater than 90%.



## SEC-HPLC

The purity of Anti-ERBB1 / EGFR / HER1 Antibody (Laprituximab emtansine) is more than 95%, determined by SEC-HPLC.