

# Serclutamab talirine reference antibody



Catalog Number: 177077

## Product name

Serclutamab talirine reference antibody

## Specificity

Human ERBB1 / EGFR / HER1

## Antibody description

Anti-ERBB1 / EGFR / HER1 Antibody  
(Serclutamab talirine)

## Preparation

Recombinant expression and purified from CHO cells.

## Formulation

0.1 M Pro-Ac, 20 mM Arg, pH 5.0

## Storage

-80°C for 2 years under sterile conditions; -20°C for 1 year under sterile conditions; Avoid repeated freeze-thaw cycles.

## Clonality

Monoclonal

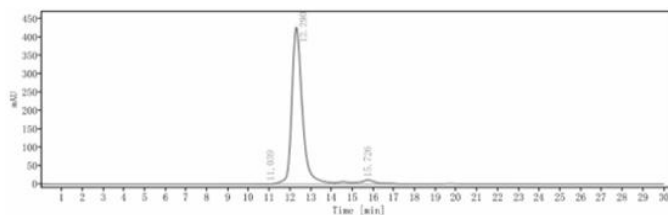
## Ig Type

IgG1

## Applications

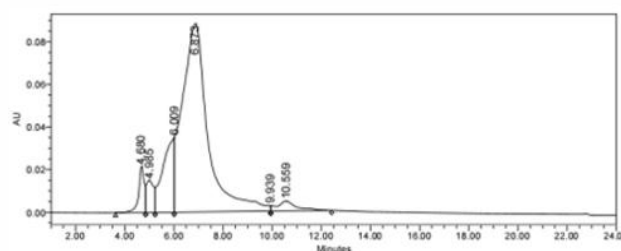
ELISA

## Validations



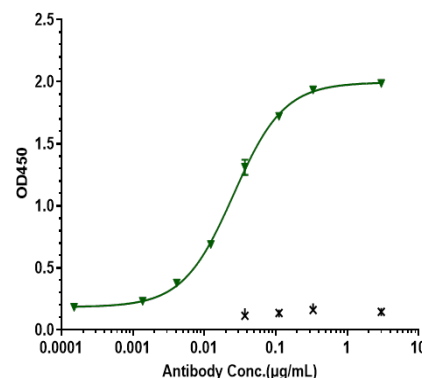
## SEC-HPLC

The purity of Anti-ERBB1 / EGFR / HER1 Antibody (Serclutamab talirine) is more than 95%, determined by SEC-HPLC.



## HIC-HPLC

The drug-to-antibody ratio (DAR) of the Anti-ERBB1 / EGFR / HER1 Antibody (Serclutamab



talirine) is 1.8.

## ELISA

Immobilized EGFR chis at 2 ug/mL can bind Serclutamab talirine with the EC50 of 0.02557 ug/mL.