

# Pinatuzumab vedotin reference antibody



Catalog Number: 176968

## Product name

Pinatuzumab vedotin reference antibody

## Specificity

Human Siglec-2 / CD22

## Antibody description

Anti-Siglec-2 / CD22 Antibody (Pinatuzumab vedotin)

## Preparation

Recombinant expression and purified from CHO cells.

## Formulation

0.1 M Pro-Ac, 20 mM Arg, pH 5.0

## Storage

-80°C for 2 years under sterile conditions; -20°C for 1 year under sterile conditions; Avoid repeated freeze-thaw cycles.

## Clonality

Monoclonal

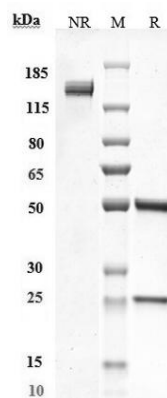
## Ig Type

IgG1

## Applications

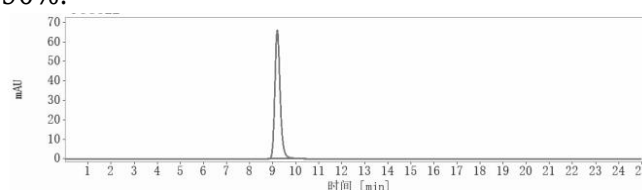
ELISA

## Validations



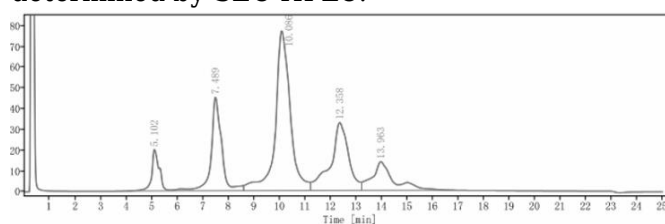
## SDS-PAGE

Anti-Siglec-2 / CD22 Antibody (pinatuzumab vedotin) on SDS-PAGE under reducing (R) condition. The purity of the protein is greater than 90%.



## SEC-HPLC

The purity of Anti-Siglec-2 / CD22 Antibody (pinatuzumab vedotin) is more than 95%, determined by SEC-HPLC.



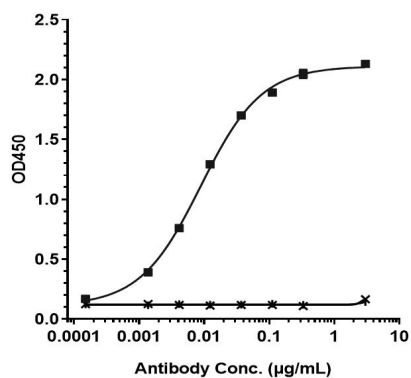
## HIC-HPLC

The drug-to-antibody ratio (DAR) of the Anti-Siglec-2 / CD22 Antibody (Pinatuzumab vedotin) is

# Pinatuzumab vedotin reference antibody



Catalog Number: 176968



Bioactivity: ELISA

Immobilized human Siglec 2 / CD22, His Tag at 2 ug/mL can bind Anti-Siglec-2 / CD22 Antibody (Pinatuzumab vedotin), EC50=0.008851 ug/mL.

4.3.