

Sintilimab reference antibody



Catalog Number: 176946

Product name

Sintilimab reference antibody

Specificity

Human PDCD1 / PD-1 / CD279

Antibody description

Anti-PDCD1 / PD-1 / CD279 Antibody (Sintilimab)

Preparation

Recombinant expression and purified from CHO cells.

Formulation

0.1 M Pro-Ac, 20 mM Arg, pH 5.0

Storage

-80°C for 2 years under sterile conditions; -20°C for 1 year under sterile conditions; Avoid repeated freeze-thaw cycles.

Clonality

Monoclonal

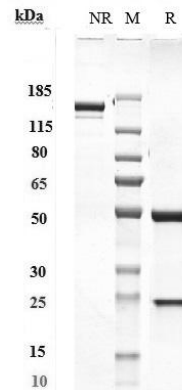
Ig Type

IgG4SP

Applications

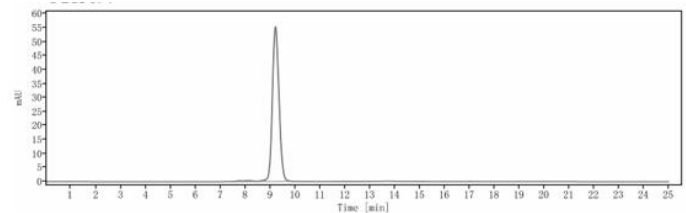
ELISA

Validations



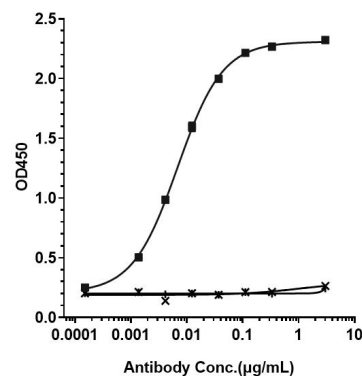
SDS-PAGE

Anti-PDCD1 / PD-1 / CD279 Antibody (sintilimab) on SDS-PAGE under reducing (R) condition. The purity of the protein is greater than 95%.



SEC-HPLC

The purity of Anti-PDCD1 / PD-1 / CD279 Antibody (sintilimab) is 98.24%, determined by SEC-HPLC.



Bioactivity: ELISA

Immobilized human PD-1 His at 2 µg/mL can bind Anti-PDCD1 / PD-1 / CD279 Antibody (sintilimab), EC50=0.006827 µg/mL.