

# Serplulimab reference antibody



Catalog Number: 176945

## Product name

Serplulimab reference antibody

## Specificity

Human PDCD1 / PD-1 / CD279

## Antibody description

Anti-PDCD1 / PD-1 / CD279 Antibody  
(Serplulimab)

## Preparation

Recombinant expression and purified from CHO cells.

## Formulation

0.1 M Pro-Ac, 20 mM Arg, pH 5.0

## Storage

-80°C for 2 years under sterile conditions; -20°C for 1 year under sterile conditions; Avoid repeated freeze-thaw cycles.

## Clonality

Monoclonal

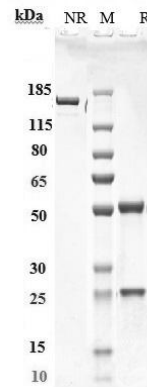
## Ig Type

IgG4SP

## Applications

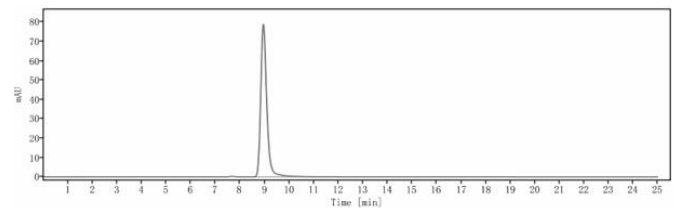
ELISA

## Validations



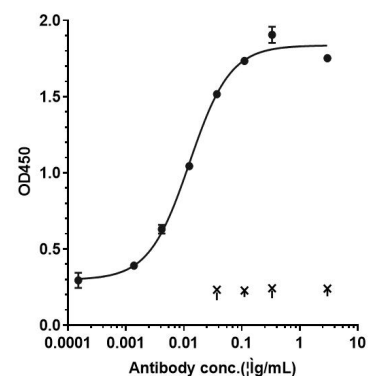
## SDS-PAGE

Anti-PDCD1 / PD-1 / CD279 Antibody (serplulimab) on SDS-PAGE under reducing (R) condition. The purity of the protein is greater than 95%.



## SEC-HPLC

The purity of Anti-PDCD1 / PD-1 / CD279 Antibody (serplulimab) is more than 95%, determined by



## SEC-HPLC.

Bioactivity: ELISA

Immobilized human PD-1 His at 2 ug/mL can bind Anti-PDCD1 / PD-1 / CD279 Antibody (serplulimab), EC50=0.0125 ug/mL.